



雷金过滤设备

A GUIDE TO PRODUCTS AND SERVICES

服务专业
Professional Service

Shanghai Rejin Filter Engineering & Equipment Co., Ltd
V 2016

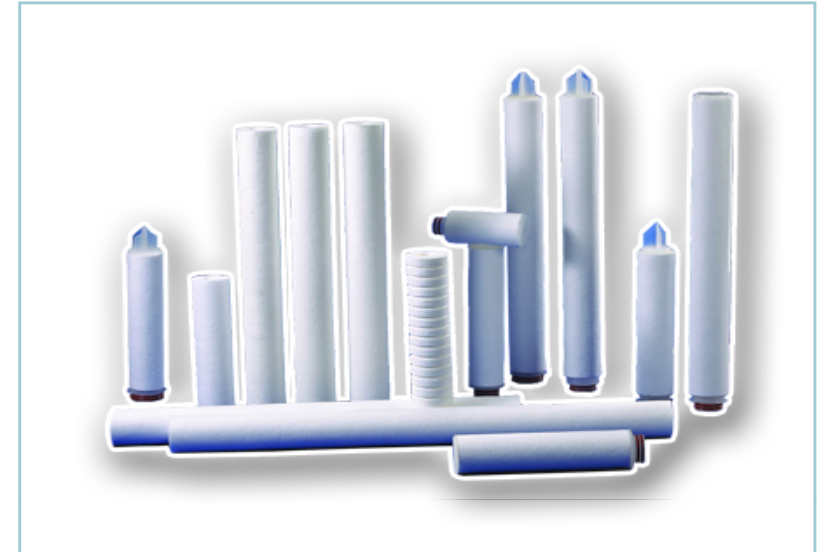
www.rejinfilter.com.cn



Contents

1. Filter Cartridges

| | |
|---|------|
| PP Pleated Filter Cartridges..... | 1.1 |
| PES Liquid Sterilization Filter Cartridges..... | 1.2 |
| PTFE Gas Sterilization Filter Cartridges..... | 1.3 |
| PP Meltblown Filter Cartridges..... | 1.4 |
| String Wound Filter Cartridges..... | 1.5 |
| Pleated Metal Mesh Filter Cartridges..... | 1.6 |
| Sintered Metal Powder Filter Cartridges..... | 1.7 |
| Activated Carbon Filter Cartridges..... | 1.8 |
| Bag Filters..... | 1.9 |
| High Flow Filter Cartridges..... | 1.10 |





雷金过滤设备

Contents

2. Filter Housings

| | |
|--------------------------------------|------|
| Single Stack Gas Filter Housings | 2.1 |
| Multi Stack Gas Filter Housings | 2.2 |
| Single Stack Venting Filter Housings | 2.3 |
| Multi Stack Venting Filter Housings | 2.4 |
| Single Stack Liquid Filter Housings | 2.5 |
| DD-1R Liquid Filter Housings | 2.6 |
| DD-1W Liquid Filter Housings | 2.7 |
| CD-1W Liquid Filter Housings | 2.8 |
| CD-2R Liquid Filter Housings | 2.9 |
| CD-2R-T Liquid Filter Housings | 2.10 |
| DS-1R Liquid Filter Housings | 2.11 |
| D Cast Head Filter Housings | 2.12 |





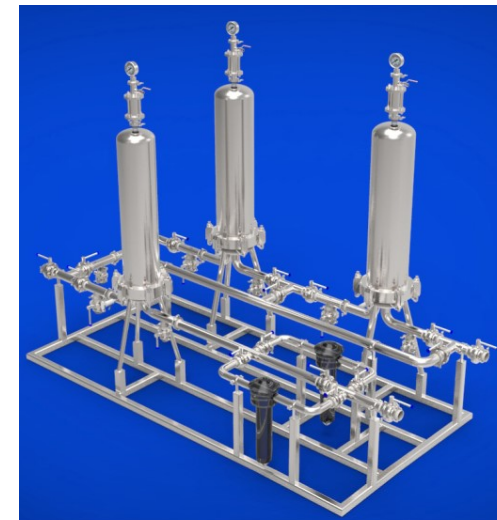
雷金过滤设备

Contents

| | |
|----------------------------|------|
| Strainer Filter Housings | 2.13 |
| Safety Filter Housings | 2.14 |
| Module Filter Housings | 2.15 |
| Single Bag Filter Housings | 2.16 |
| Multi-Bag Filter Housings | 2.17 |
| High Flow Filter Housings | 2.18 |

3.Filter Systems and Equipments

| | |
|--------------------------------------|------------|
| Beer Final Filter Systems | 3.1 |
| Cross Flow Filter Systems | 3.2 |
| CIP Systems | 3.3 |
| Sterile Air Filter Systems | 3.4 |
| KG sack empty systems | 3.5 |
| Various Filter systems | 3.6 |
| Filter Cartridge End Caps | appendix1 |
| Filter Housings Code Tables | appendix 2 |
| Filter Mesh and Micro Contrast table | appendix 3 |





雷金过滤设备

1.1.1 Polypropylene Pleated Filter Cartridges

Features and Benefits

- Made of pleated polypropylene, in conformance to GMP and FDA, resin and surfactant-free, wide chemical compatibility
- All-polypropylene construction, double layers medium, inter layer is as fine filter, and outer layer is as pre-filter. In fact, it is combined by pre-filter and fine filter
- Bigger area by pleated media, low different pressure of beginning, high flowrate
- High dirty capacity and service life by double layers
- It is easy to be make sure the solvent compatibility
- With fixed structure, no medium migration, unloading and channeling.





雷金过滤设备

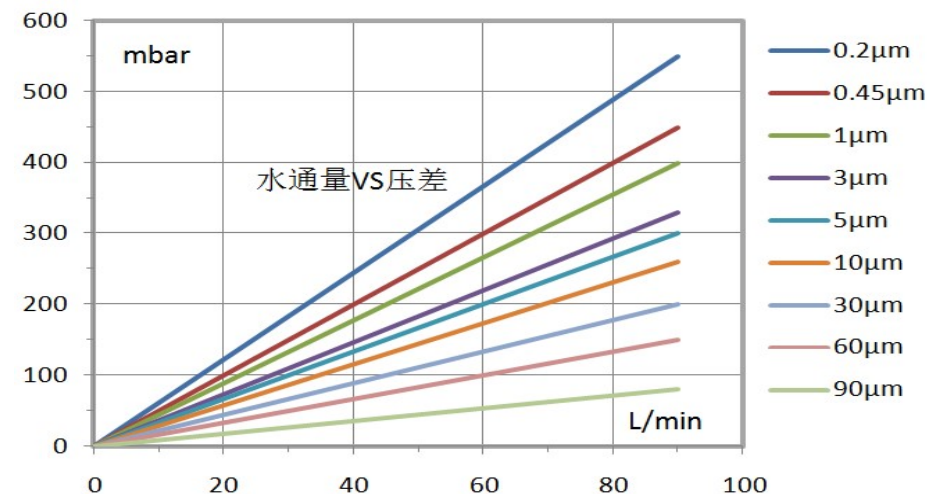
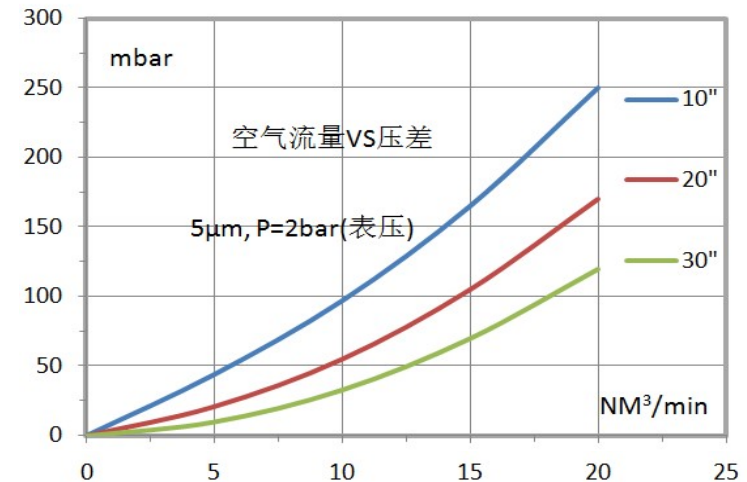
1.1.2 Polypropylene Pleated Filter Cartridges

Typical Applications

- **Gas:** As pre-filter is used in food, fermentation, pharmacy and electronic industry etc
- **Liquid:** Fermentation solutions, oral/topical medications, antibiotics, sterile water, beer, wine, bottle water, distilled spirit, soft drink, organic solvent, paint, ink, pure water, etc.

Performance Parameters

| Specification | Technical Data |
|-----------------------|--|
| Removal Ratings | 0.2-- 80 μ m |
| Filtration Area (10") | 0.5--0.7m ² |
| Filtration Efficiency | 99.98% |
| Working Temperature | $\leq 85^{\circ}\text{C}$ 0.2Mpa |
| Steam Sterilization | 121 $^{\circ}\text{C}$ 30min |
| Max. dP | Forward 0.42MPa Backward 0.1MPa@25 $^{\circ}\text{C}$ |





雷金过滤设备

1.1.3 Polypropylene Pleated Filter Cartridges

Ordering Information

PLPZ + ● ◆ ✕ ○

| + Ratings | ● Constructions | ◆ Lengths | ✕ adapters | ○ Seals |
|-------------|---|--|---------------------------|---------------------------|
| 020--0.2μm | DOF: Double open ended with gaskets | 05---5 inch | 7---226 | S---Silicone V---Viton |
| 045--0.45μm | | 10---10 inch | 3---222 | |
| 100--1.0μm | | SOA: Single open ended with fin cap | 20---20 inch | 7B---226 steel inter loop |
| 300--3.0μm | 30---30 inch | | 3B---222 steel inter loop | |
| 500--5.0μm | 40---40 inch | | | |
| 1k--10μm | SOT: Single open ended with flat cap | | | |
| 3k--30μm | | | | |
| 6k--60μm | | | | |
| 9k--90μm | | | | |

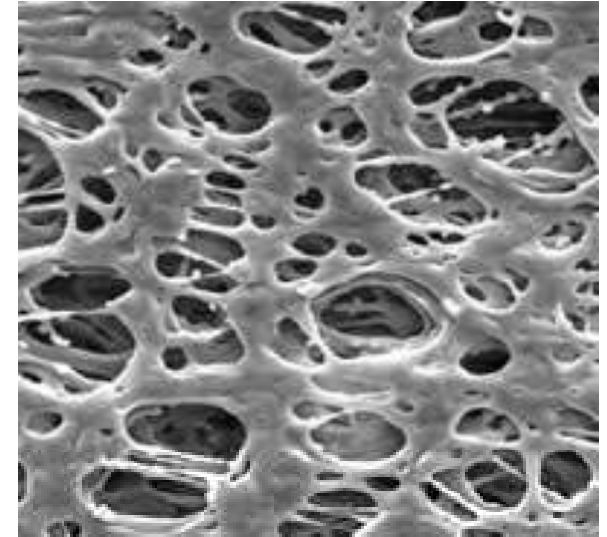
Order Example

PN: PLPZ500SOA107S, PLPZ---Polypropylene pleated filter cartridges; Ratings: 5um; Construction: Single open ended with fin cap; Lengths: 10 inch; adapters: 226; Seals materials: Silicone

1.2.1 PES Liquid Sterilization Filter Cartridges

Features and Benefits

- PES (Polyethersulfone) was developed to the best membrane in voidage, with intrinsically water wettable, the cartridge was made of polypropylene supports, drainage, end caps, core/cage. FDA-listed materials per 21 CFR. Resin and surfactant free. Broad solvent compatibility
- Outer support layer is pre-filter, longer service life
- Chemical-resistant and high stability
- Good in water wettable, free of wetting in advance, superior flow rate.
- Little sorption, ensure high quality to filtration
- Integrity test before leaving factory
- The hydrophilic polyethersulfone Supor membrane combined with polypropylene, Higher voids, good permeability, non-shedding membrane, adhesive and surfactant free



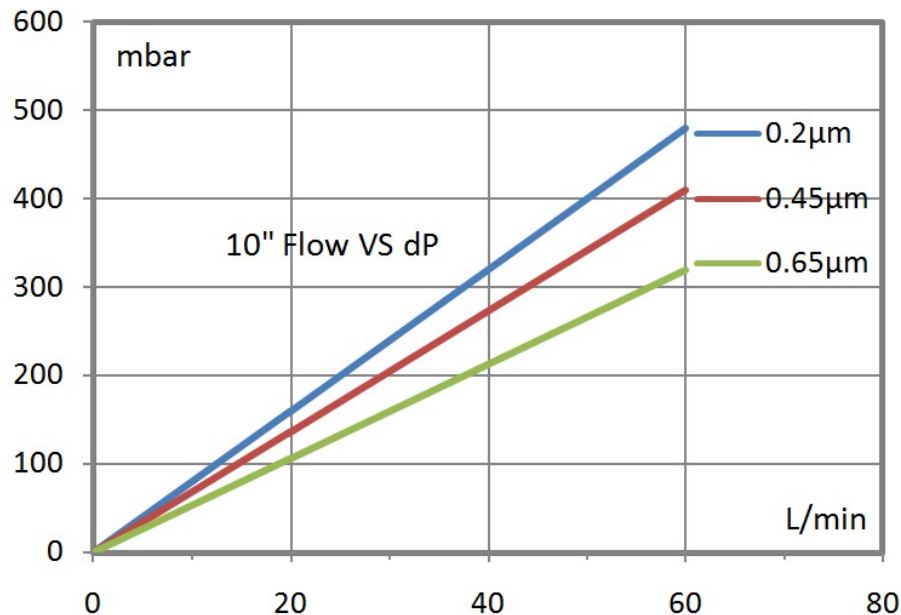


雷金过滤设备

1.2.2 PES Liquid Sterilization Filter Cartridges

Typical Applications

- **Pharmaceutical:** parenterals, ophthalmics, serum, fermentation feed stocks, proteinaceous solutions, oral/topical medications, antibiotics, sterile water
- **Food & Beverage:** beer, wine, bottle water, distilled spirit, soft drink.



Performance Parameters

| Specification | Technical Data | | |
|--|--|---------------------|--------------------------|
| Removal Ratings | 0.2 μm | 0.45 μm | 0.65 μm |
| Filtration Area | 0.7 m ² (10") | | |
| Filtration Membrane | PES Polyethersulphone | | |
| Support Core, End caps | Polypropylene | | |
| Steam Sterilization | Temperature 121°C @ ≤0.03Mpa, Cumulative time 50 hours | | |
| Hot Water Sanitization | Temperature 85°C @ 0.3MPa, Cumulative time 50 hours | | |
| Max. dP | 0.42MPa @ 25°C | | |
| Bacterial Challenge ≥10 ⁷ cfu/cm ² | Brevundimonas diminuta | Serratia marcescens | Saccharomyces cerevisiae |
| Diffusional Flow(water, 20°C, 10") | 21ml/min 2.4bar | 21ml/min 1.7bar | 21ml/min 1.4bar |
| Non volatile residue | <40ppm/10 inch | | |



1.2.3 PES Liquid Sterilization Filter Cartridges

Ordering Information

SP + ● ◆ ✕ ○

| ✚ Ratings | ● Constructions | ◆ Lengths | ✕ adapters | ○ Seals |
|-------------|---|--------------|---------------------------|---------------------------|
| 020--0.2μm | DOF: Double open ended with gaskets | 05---5 inch | 7---226 | S---Silicone V---Viton |
| 045--0.45μm | | 10---10 inch | 3---222 | |
| 065—0.65μm | SOA: Single open ended with fin cap | 20---20 inch | 7B---226 steel inter loop | |
| | | 30---30 inch | 3B---222 steel inter loop | |
| | | 40---40 inch | | |
| | SOT: Single open ended with flat cap | | | |

Order Example

PN: SP045SOA107S, SP---Polyethersulphone liquid sterilization filter cartridges; Ratings: 0.45um
Construction: Single open ended with fin cap; Lengths: 10 inch; adapters: 226; Seals materials:
Silicone



雷金过滤设备

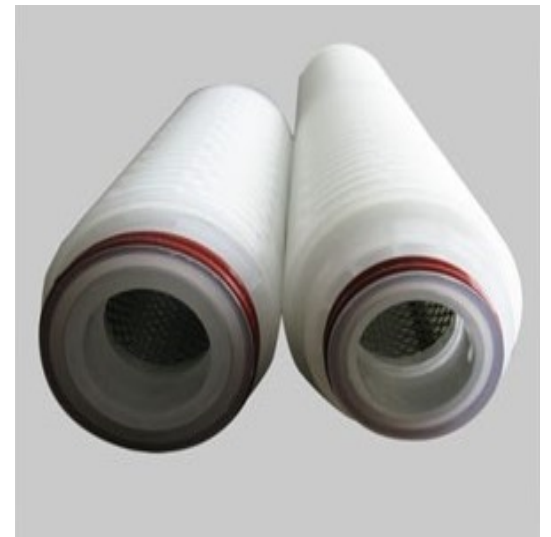
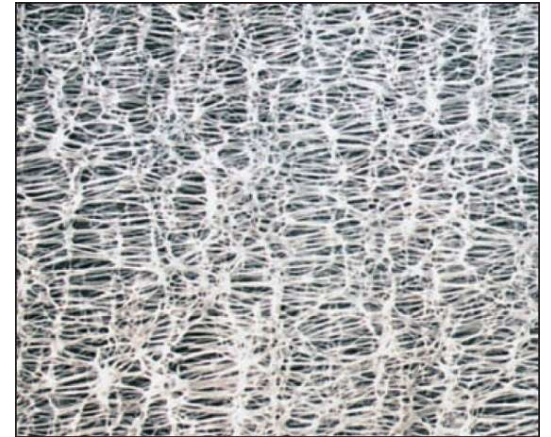
1.3.1 PTFE Gas Sterilization Filter Cartridges

Features and Benefits

- PTFE membranes, inherently hydrophobic, core, cage, end caps all materials conform to the relevant requirements of GMP.
- inherently hydrophobic membranes with an absolute removal rating of 0.01 micron for gas applications. This ensures the removal of all airborne, viruses and bacteriophage.
- Enhanced steaming resistance.
- Broad chemical compatibility, sanitary cartridge.
- 100% integrity test.
- High flow / low pressure drop, fixed pores, membrane protected by two supporting layers, melt-sealed, adhesive free.

Typical Applications

- Food, fermentation, pharmaceutical, electronic and other industry air / gas sterile filtration



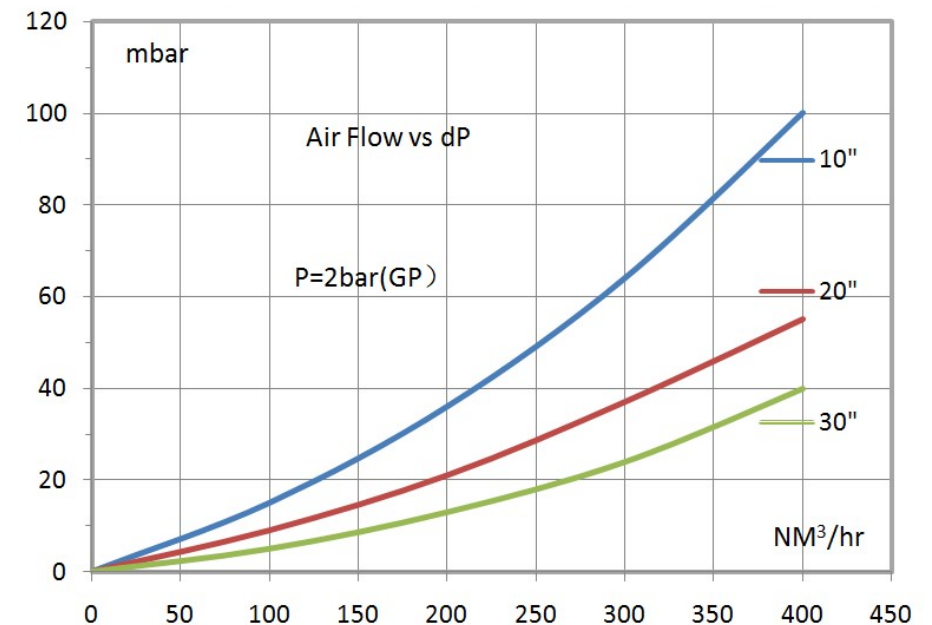
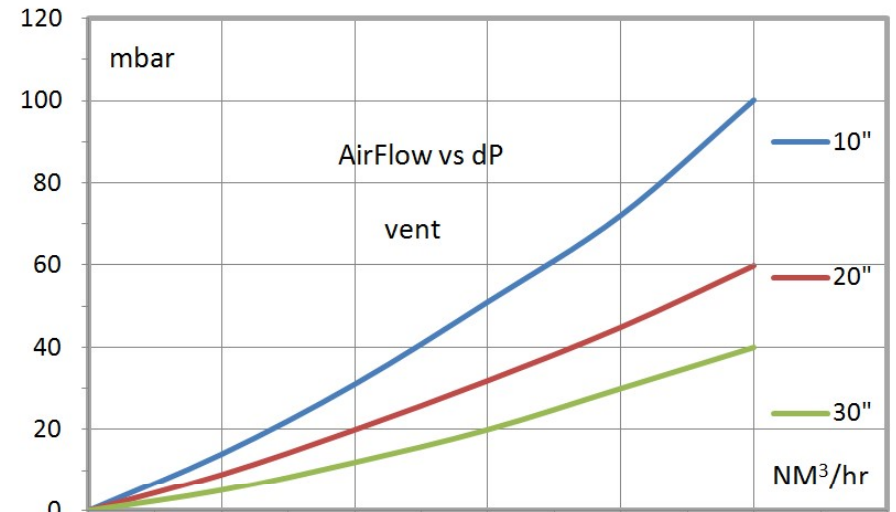


雷金过滤设备

1.3.2 PTFE Gas Sterilization Filter Cartridges

Performance Parameters

| Discription | Technical Data |
|--|--|
| Removal Ratings | 0.2 μ m (Liquid) , 0.01 μ m (Gas) |
| Filtration Membrane | Hydrophobic PTFE |
| Support/cage/end caps | Polypropylene |
| Adapter | Polypropylene with encapsulated stainless steel reinforcing ring |
| Bacterial Challenge | $\geq 10^7$ CFU/cm ² , Brevundimonas diminuta |
| Steam Sterilization | 142 $^{\circ}$ C cumulative time 165hours @0.2bar |
| Max. dP | 0.5MPa,25 $^{\circ}$ C |
| Filtration Area | 0.79m ² (10") |
| Integrity Test(10") IPA/Water:60/40 | ≤ 16 ml/min@1000mbar |
| Non volatile residue | <40ppm(10" filter) |





雷金过滤设备

1.3.3 PTFE Gas Sterilization Filter Cartridges

Ordering Information

PTFE + ● ◆ ✕ ○

| + Ratings | ● Constructions | ◆ Lengths | ✕ adapters | ○ Seals |
|-----------|---|---|--|---------------------------|
| 020—0.2μm | DOF: Double open ended with gaskets SOA: Single open ended with fin cap SOT: Single open ended with flat cap | 05---5 inch 10---10 inch 20---20 inch 30---30 inch 40---40 inch | 7---226 3---222 7B---226 steel inter loop 3B---222 steel inter loop | S---Silicone V---Viton |

Order Example

PN: PTFE020SOA107BS, PTFE---Polytetrafluoroethylene gas sterilization filter cartridges; Ratings: 0.2um (0.01um in gas); Construction: Single open ended with fin cap; Lengths: 10 inch; adapters: 226 steel inter loop; Seals materials: Silicone



雷金过滤设备

1.4.1 Polypropylene Meltblown Filter Cartridges

Features and Benefits

- Continuous all-polypropylene meltblown elements, free of surfactants, binders and adhesives
- This is a depth filter element, feature tapered pores that narrow to a inner(downstream) absolute rated section. This thick depth structure provides high capacity for large solids and gels as well as fine particles
- Graded pore structure enhances dirty holding capacity. Service life is longer than ordinary one
- With all-polypropylene media and core, It is easy to be make sure the solvent compatibility
- With fixed structure, no medium migration, unloading and channeling

Typical Applications

- **Food & beverage:** beer, soft drink, bottle water, edible oil, syrup etc
- **Pharmaceutical:** Medications, serum, pre-filter of sterile water etc
- **Chemical industry:** organic solvent, paint, ink etc
- **Electronic:** pre-filter before RO and fine-filter



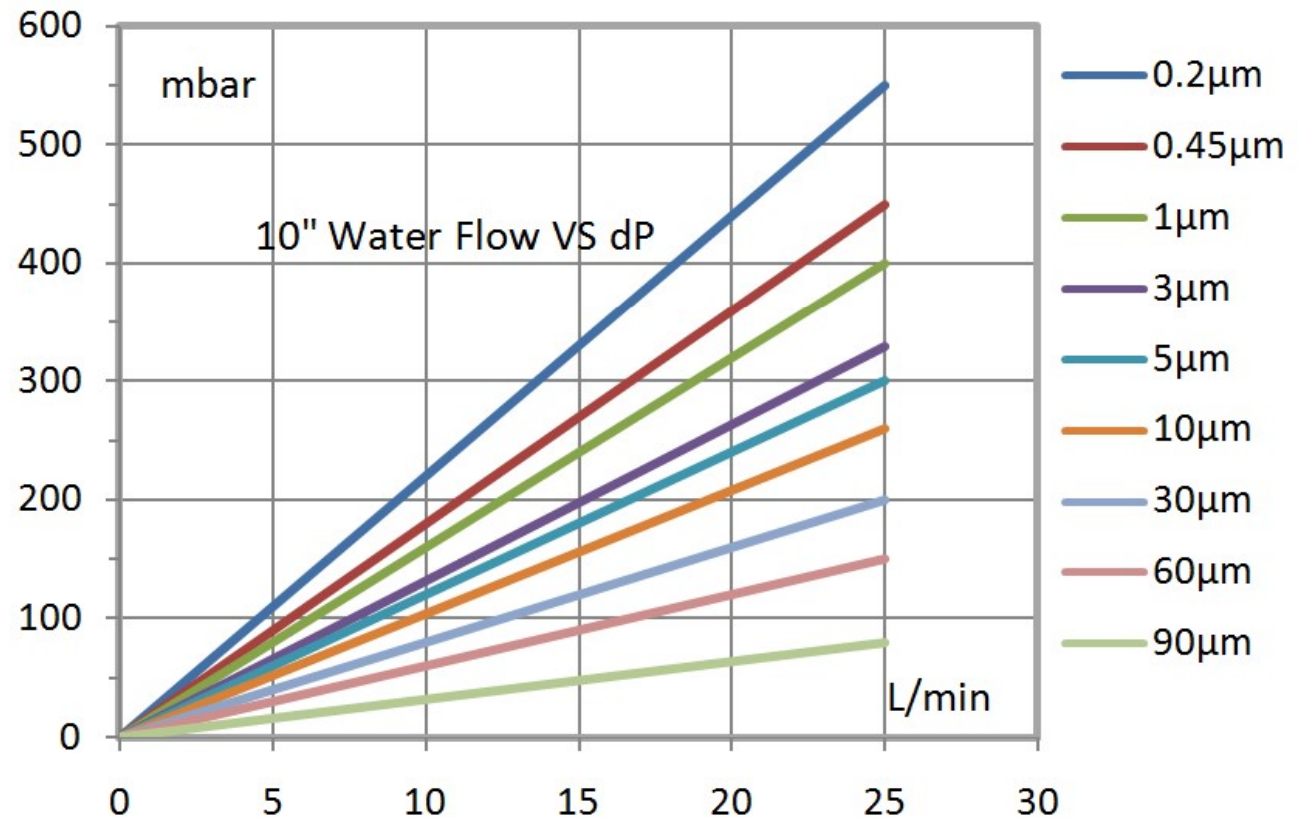
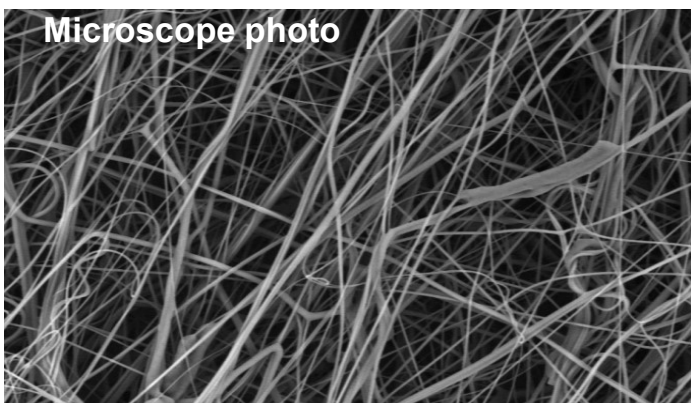


雷金过滤设备

1.4.2 Polypropylene Meltblown Filter Cartridges

Performance Parameters

| Discription | Technical Data |
|-----------------------|----------------------------------|
| Removal Ratings | 0.2-90 μ m |
| Diameter | Outer 64mm, Inner 25mm |
| Filtration Media | Polypropylene |
| Core/end caps/adaptor | Polypropylene |
| Max. dP | 0.45 MPa 25 $^{\circ}$ C |
| Sanitization | Hot water \leq 90 $^{\circ}$ C |





1.4.3 Polypropylene Meltblown Filter Cartridges

Ordering Information

PLP + ● ◆ ✕ ○

| + Ratings | ● Constructions | ◆ Lengths | ✕ adapters | ○ Seals |
|------------|-----------------------------|--------------|---------------------------|--------------|
| 020—0.2μm | DO: Double open ended | 05---5 inch | 7---226 | S---Silicone |
| 045—0.45μm | without gaskets | 10---10 inch | 3---222 | V---Viton |
| 100—1.0μm | DOF: Double open ended | 20---20 inch | 7B---226 steel inter loop | |
| 300—3.0μm | with gaskets | 30---30 inch | 3B---222 steel inter loop | |
| 500—5.0μm | SOA: Single open ended with | 40---40 inch | | |
| 1k—10μm | fin cap | | | |
| 3k—30μm | SOT: Single open ended with | | | |
| 6k—60μm | flat cap | | | |
| 9k—90μm | | | | |

Order Example

PN: PLP300SOA307S, PLP---Polypropylene meltblown filter cartridges; Ratings: 3um ; Construction: Single open ended with fin cap; Lengths: 30 inch; adapters: 226; Seals materials: Silicone.



雷金过滤设备

1.5.1 String Wound Filter Cartridges

Features and Benefits

- The cartridge is made of special fiber string, wrapped in a stick with holes, its filtration rating can be regulated by diameter of string and variational array
- High flowrate, different pressure and heat-resistant, broad chemical compatibility
- Sparse outer and pressing inter, depth filter with high dirty capacity, wide range in rating, low cost
- No second contamination, good permeability



Typical Applications

- **Food & beverage:** Bottle water, soft drink, beer and wine, vinegar, edible oil etc
- **Pharmaceutical:** Sirup, alcohol, terramycin, Inject water
- **Electronic:** Electroplate, electrocircuit board, organic solvent, pure water
- **Chemical industry:** organic solvent, paint, ink , etc
- **Others:** Ultrasonic cleaning water, cooling, water, boiler water, sensitization film latex



1.5.2 String Wound Filter Cartridges

Performance Parameters

| Filtration Media | Max. Temperature °C | Water | Organic Solvent | Oil | Organic Acid | Alkali | Oxidizing Agent | Steam | Strong Acid | Weak Acid |
|--|---------------------|-------|-----------------|-----|--------------|--------|-----------------|-------|-------------|-----------|
| Absorbent cotton | 149/60 | √ | √ | √ | O | O | X | O | X | X |
| Polypropylene | 93/60 | √ | O | √ | √ | √ | O | O | √ | √ |
| Polyester | 121/60 | √ | √ | O | O | X | O | O | X | O |
| Remarks: High temperature resistant filter with stainless steel inner core; √- Compatible; O-Limited Compatibility; X-Not Compatible | | | | | | | | | | |

Water flow: L/min @ initial $\Delta P=0.1\text{bar}$, 20°C, 10”(254mm) filter

| Ratings μm | 1 | 3 | 5 | 10 | 20 | 30 | 50 | 70 | 100 | 200 |
|-----------------------|----|----|----|----|----|----|----|----|-----|-----|
| P-Polypropylene | 10 | 13 | 17 | 20 | 22 | 24 | 27 | 30 | 33 | 40 |
| Q-Polyester | 13 | 17 | 22 | 26 | 27 | 31 | 35 | 39 | 43 | 52 |
| T-Absorbent cotton | 6 | 8 | 10 | 12 | 13 | 14 | 16 | 18 | 20 | 24 |



1.5.3 String Wound Filter Cartridges

Ordering Information

RW + ● ◆ ✕

| + Ratings | | ● Filtration Media | ◆ Lengths | ✕ Inner Cores |
|-----------|-----------|--------------------|-----------|------------------------|
| 1-1μm | 30-30μm | P—Polypropylene | 1—10" | P—Polypropylene |
| 2-2μm | 50-50μm | Q—Polyester | 2—20" | S—304 Stainless Steel |
| 3-3μm | 70-70μm | T—Absorbent cotton | 3—30" | L—316L Stainless Steel |
| 5-5μm | 100-100μm | | 4—40" | T—Stainless iron |
| 10-10μm | 200-200μm | | | |
| 20-20μm | | | | |

Order Example

PN: RW3T1S , RW---String wound filter cartridges; Ratings: 3um ; Filtration media: Absorbent cotton; Lengths: 10 inch; Inner cores: 304 Stainless steel

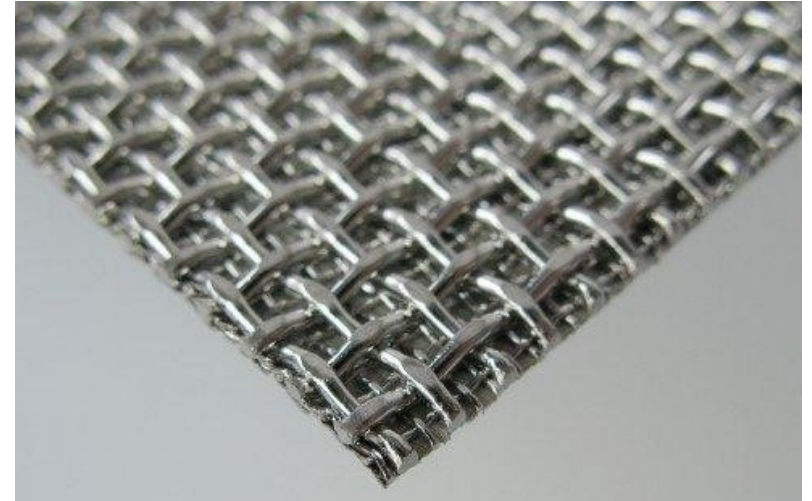
1.6.1 Pleated Metal Mesh Filter Cartridges

Features and Benefits

- Stainless steel fibres sintered mesh or stainless steel woven wire mesh
- Higher voids, good permeability and lower differential pressure
- Accurate retention rate, not shift under stress
- Repeatedly cleanable
- Larger filter area due to pleated construction

Typical Applications

- **Chemical:** organic solvents, paint, ink
- **Food & Beverage:** High temperature syrups, Ozone containing water, Mineral water, Water for drinks, Liquors, Edible oil, Vinegar etc .
- **Pharmaceutical:** Syrups, Alcohol, High-temperature corrosive liquids and gases
- **Electronic:** Security filter before RO





1.6.2 Pleated Metal Mesh Filter Cartridges

Performance Parameters

Max. Differential Pressure at 20°C
Forward flow direction: 8.2 bard
Reverse flow direction: 0.8 bard

| Removal Ratings μm | ΔP Psi/gpm/ft | Flow rates t/10" |
|-------------------------------|-----------------------------|------------------|
| 2 | 0.035 | 1.1~3.3 |
| 5 | 0.0073 | 1.7~4.9 |
| 10 | 0.002 | 2.2~6.1 |
| 40 | 0.0006 | 2.7~11 |
| 70 | 0.0004 | 3.3~45.5 |

Above mentioned flow for 10 inch (filtration area 0.12m²) element, water at 20°C, viscosity 1 cP.



雷金过滤设备

1.6.3 Pleated Metal Mesh Filter Cartridges

Ordering Information

PLB + ● ◆ ✕ ○ ▲

| + | ● | ◆ | ✕ | ○ | ▲ |
|-----------|-----------------------|-------------------------------------|-----------|----------|-------------------|
| Materials | Ratings μm | Constructions | Lengths | adapters | Weave Forms |
| S - 304 | 2-2.0 μm | SOA-Single open ended with fin cap | 05-127mm | 3-222 | M - Mat Mesh |
| L- 316L | 5-5 μm | | 10-254mm | 7-226 | S - Sintered Mesh |
| | 10-10 μm | | 20-508mm | | |
| | 15-15 μm | DOF-Double open ended with gaskets | 30-762mm | | |
| | 20-20 μm | | 40-1016mm | | |
| | 50-50 μm | SOT-Single open ended with flat cap | | | |
| | 100-100 μm | | | | |

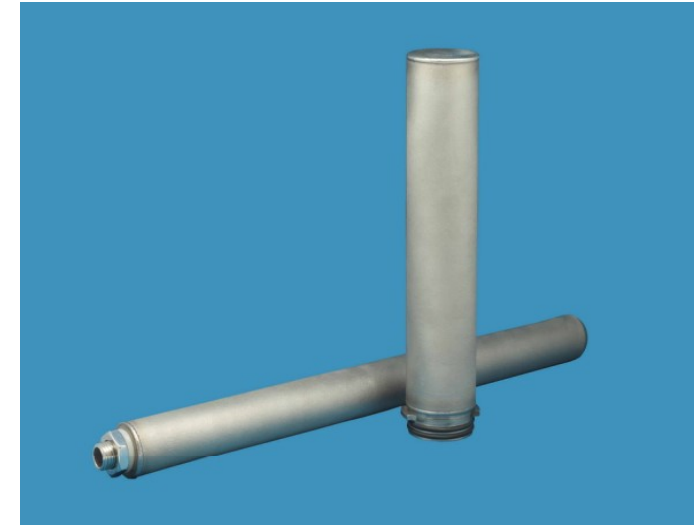
Order Example

PN: PLBS10SOA 307M, PLB---Pleated metal mesh filter cartridges; Materials: 304 Stainless steel; Ratings: 10 μm ; Constructions: Single open ended with fin cap; Lengths: 30 inch; adapters: 226; Weave Forms: Mat Mesh

1.7.1 Sintered Metal Powder Filter Cartridges

Features and Benefits

- Fine stainless steel powders sintered
- Higher voids, controlled and fixed pore size, no unloading or shedding
- High-temperature capabilities, high pressure and corrosion resistant, withstands high reverse-flows
- Repeatedly cleanable
- Conformance with GB9684-2011



Typical Applications

- **Food & Beverage:** Liquors, Drinks, Syrups, Edible oil
- **Pharmaceutical:** Liquid medicines, Biological products , Serums, Gases
- **Widely used for steam service**





1.7.2 Sintered Metal Powder Filter Cartridges

Performance Parameters

| Removal Ratings μm | | Recom. Water flow LPM | Recom. Steam flow Kg / hr |
|-------------------------------|-------------|--------------------------|---------------------------------|
| Liquid Ratings | Gas Ratings | | |
| 3 | 0.3 | 6 | 65 |
| 5 | 0.5 | 10 | 87 |
| 10 | 1 | 12 | 102 |
| 20 | 2 | 20 | 123 |
| 30 | 3 | 25 | 155 |

Above mentioned flow for 10 inch element, differential pressure 0.1 bard
Water at 20°C, viscosity 1 cP
Working pressure of steam at 5 bard

1.7.3 Sintered Metal Powder Filter Cartridges

Ordering Information

PLS + ● ◆ ✕ ○

| + Ratings | ● Constructions | ◆ Lengths | ✕ adapters | ○ Seals |
|-----------|---|--------------|--------------|--------------|
| 3—3μm | DOF: Double open ended with gaskets | 05---5 inch | 7---226 | S---Silicone |
| 5—5μm | | 10---10 inch | 3---222 | V---Viton |
| 10—10μm | SOA: Single open ended | 20---20 inch | R---threaded | |
| 20—20μm | with fin cap | 30---30 inch | | |
| 30—30μm | SOT: Single open ended with flat cap | 40---40 inch | | |

Order Example

PN: PLS5SOA107S, PLS---Sintered metal powder filter cartridges; Ratings: 5um; Construction: Single open ended with fin cap; Lengths: 10 inch; adapters: 226; Seals materials: Silicone



雷金过滤设备

1.8.1 Activated Carbon Filter Cartridges

Features and Benefits

- Bonded porous activated carbon with polyethylene binder and netting. End caps, inner/outer warps is made of polypropylene
- Materials meet FDA requirements
- High porosity design maximizes utilization of carbon prevent premature plugging
- High dirty capacity and service life
- With fixed structure, no medium migration, unloading and channeling.

Typical Applications

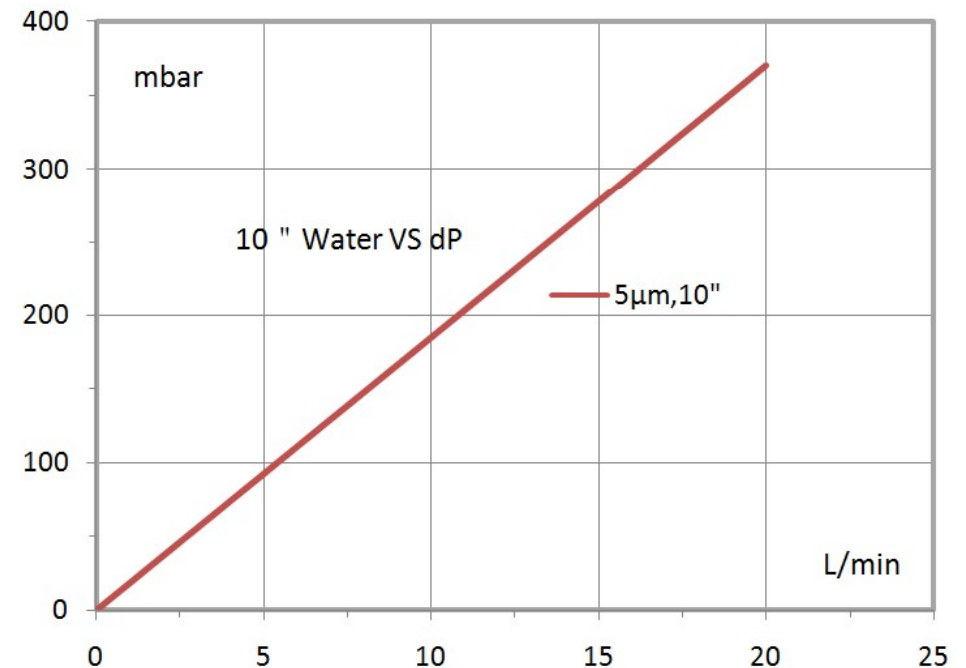
- **Gas:** As pre-filter, it is used in removal taste, odor, color and particulate
- **Liquid:** Bottle water, drink water, rinse water etc. Remove organics, taste, odor, color, chlorine and particulates in water



1.8.2 Activated Carbon Filter Cartridges

Performance Parameters

| Discription | Technical Data |
|------------------------|--|
| Removal Ratings | 5 μ m |
| Diameter | Outer 64 mm Inner 28 mm |
| Chlorine Reduction/10" | From 2ppm to < 0.5ppm, filtration volume > 2,700L.@ 3.8Lpm |
| Operating Temperature | 5-85 $^{\circ}$ C |
| Sanitization | Hot water < 90 $^{\circ}$ C |
| Max. dP | 0.2 MPa 25 $^{\circ}$ C |





1.8.3 Activated Carbon Filter Cartridges

Ordering Information

RAC + ● ◆ ✕ ○

| + Ratings | ● Constructions | ◆ Lengths | ✕ adapters | ○ Seals |
|-----------|---|---|--------------------|---------------------------|
| 5—5μm | DOF: Double open ended with gaskets SOA: Single open ended with fin cap SOT: Single open ended with flat cap | 05---5 inch 10---10 inch 20---20 inch 30---30 inch 40---40 inch | 7---226 3---222 | S---Silicone V---Viton |

Order Example

PN: RAC5DOF10S, RAC---Activated carbon filter cartridges; Ratings: 5um; Construction: Double open ended with gaskets; Lengths: 10 inch; Seals materials: Silicone

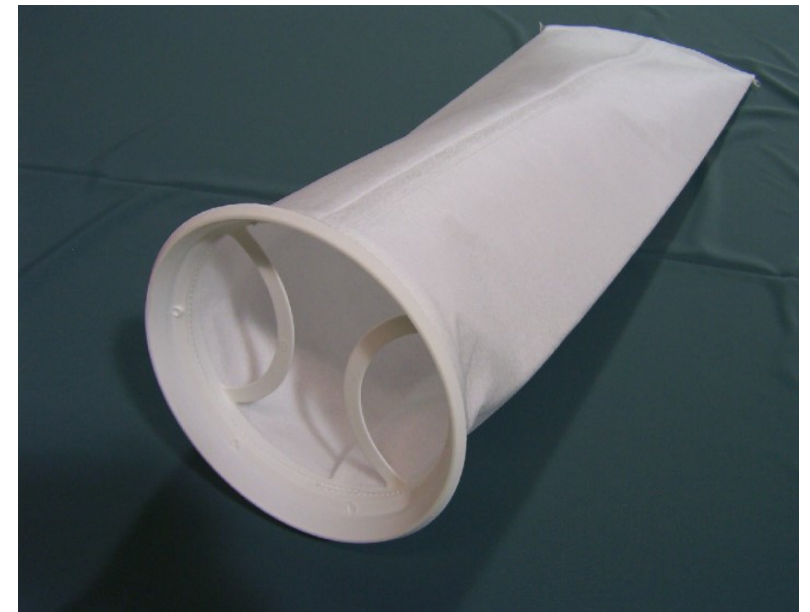
1.9.1 Bag Filters

Features and Benefits

- **Materials:** Polyester, Polypropylene, Nylon, Nomex, Rayon, PTFE, Polypropylene monofilament, Polyester monofilament, Nylon monofilament etc. These materials conform to the FDA, GMP certification and environmental standards.
- **Constructions:** the basic construction with steel ring stitching needle felt bag filter, hidden solid suture, suitable for most of applications. Melt-sealed bag filter with plastic ring, no suture, filter edge, collar connecting ring and filter with hidden solid welding methods combined, the design avoids the sewing bag leakage from the needle eyes.

Typical Applications

- Chemical, auto, painting, Enamel and viscose, food & beverage, electronic, pharmaceutical, water treatment, metal processing





雷金过滤设备

1.9.2 Bag Filters

Performance Parameters

| Materials | Code | Removal Ratings μm | | | | | | | | | |
|---------------|------|-------------------------------|---|---|----|----|----|----|-----|-----|------|
| | | 1 | 3 | 5 | 10 | 25 | 50 | 75 | 100 | 200 | >200 |
| Polypropylene | PP | • | • | • | • | • | • | | • | | |
| Polyester | PE | • | • | • | • | • | • | • | • | • | |
| Nylon | NL | | | • | • | • | • | • | • | • | • |
| Nomex | MO | | | • | • | • | • | • | • | | |
| Rayon | RA | | • | • | • | • | | | | | |

| Materials Discription | Cotton | PE | Glass Fibre | NL | Nomex | PP |
|--------------------------------|----------|-----------|-------------|----------|-----------|-----------|
| Proportion | 1.55 | 1.38 | 2.56 | 1.14 | 1.14 | 0.9 |
| Tensile Strength | 44-109 | 64-124 | 200-215 | 58-128 | 58-128 | 50-85 |
| Wear & Bending | Commonly | Very good | Bad | Best | Very good | Very good |
| Weak Acid | Bad | Very good | Best | Commonly | Commonly | Best |
| Strong Acid | Bad | Commonly | Commonly | Bad | Bad | Best |
| Weak Alkali | Best | Good | Commonly | Best | Best | Best |
| Alkali | Best | Bad | Bad | Best | Best | Best |
| Solvent | Good | Good | Best | Good | Good | Commonly |
| Temperature $^{\circ}\text{C}$ | 93-116 | 136-164 | 262-318 | 136-150 | 206-234 | 94-105 |



雷金过滤设备

1.9.3 Bag Filters

| Bag Number | Max. Water Flow (m ³ /h) | Filtration Area(m ²) | Volumes (L) | Diameters (inch/mm) | Lengths (inch/mm) |
|------------|-------------------------------------|----------------------------------|-------------|---------------------|-------------------|
| 1# | 15 | 0.25 | 7.9 | 7/178 | 6.5/419 |
| 2# | 30 | 0.5 | 17.3 | 7/178 | 32/813 |
| 3# | 5 | 0.09 | 1.4 | 4/102 | 8.25/209 |
| 4# | 10 | 0.16 | 2.5 | 4/102 | 14/355 |
| 5# | 14 | 0.2 | 3.8 | 4/102 | 20/508 |

Ordering Information

B + ● ◆ ✕ ○

| ✚ Materials | ● Ratings | ◆ Adapters | ✕ Lengths | ○ Constructions |
|------------------|-----------|-----------------|-----------|-----------------|
| PP—Polypropylene | 1—1μm | SS—Steel ring | 1—1# bag | T—Suture |
| PE—Polyester | 3—3μm | PS—Plastic ring | 2—2# bag | W—Melt-sealed |
| NL—Nylon | 5—5μm | | 3—3# bag | |
| MO—Nomex | 10—10μm | | 4—4# bag | |
| RA—Rayon | 25—25μm | | 5—5# bag | |

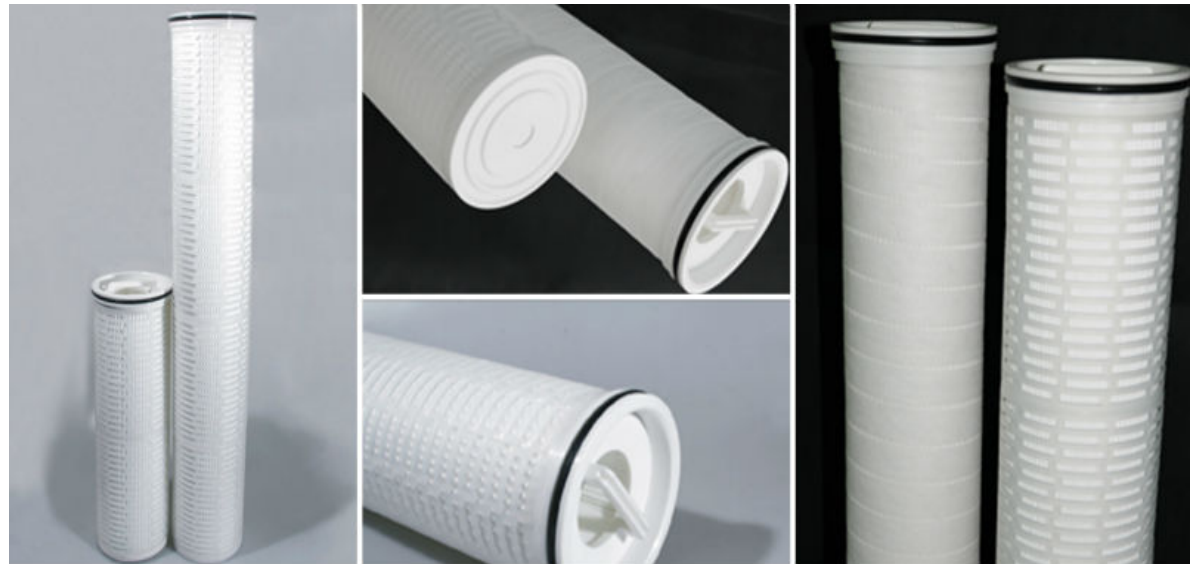
Order Example

PN: BPP3PS2W , B---Bag filters; Materials: Polypropylene; Ratings: 3um; Adapters: Plastic ring; Lengths: 2# bag; Constructions: Melt-sealed

1.10.1 High Flow Filter Cartridges

Features and Benefits

- All polypropylene construction, materials conform to the relevant requirements of GMP and FDA, adhesive and surfactant free, broad chemical compatibility
- Graded pore structure, inside to outside flow configuration allows smaller housings for high flow rate applications, inner polypropylene as pre-filter, outer polypropylene as fine filter that determines the removal ratings, it is combined by pre-filter and fine filter.
- Pleated construction, graded pore size, larger filtration area, high flow, low pressure drop
- Up to 50% smaller filter system possible
- All polypropylene, easy to be sure the solvent compatibility
- Higher flow rates per filter cartridge – up to 120M³/hr





雷金过滤设备

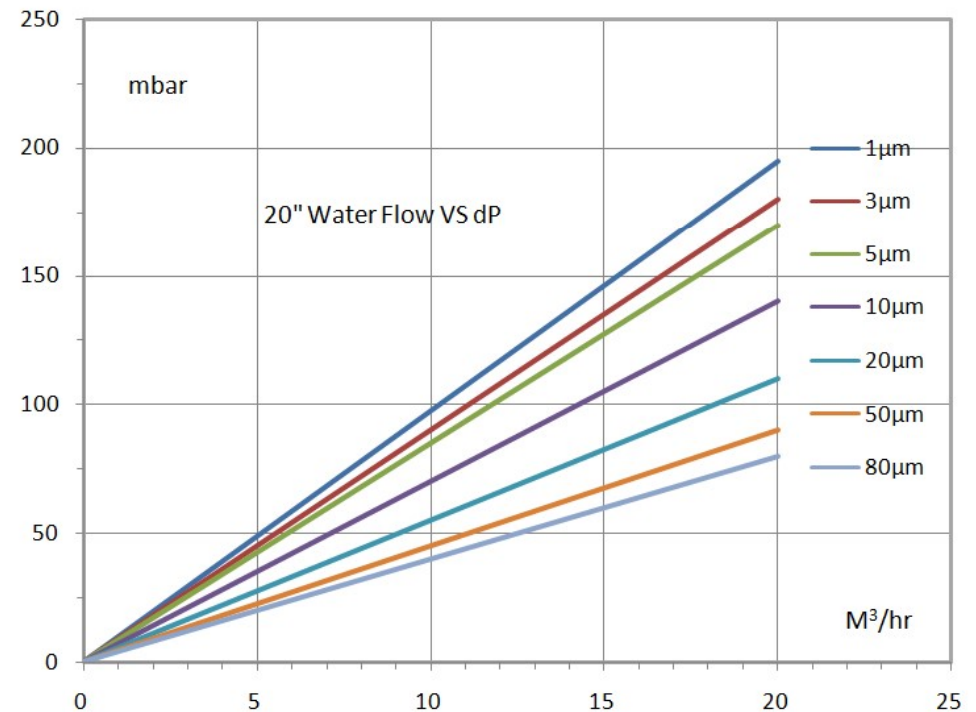
1.10.2 High Flow Filter Cartridges

Typical Applications

- Liquors, drinks, sirup, edible oil, liquid medicine, biological products, serum
- Organic solvents, paint, ink , security filter before RO, Pre-filtration and fine filtration of deionized water

Performance Parameters

| Description | Technical Data |
|-----------------------|---|
| Removal Ratings | 0.2~100 μm |
| Filtration Media | Polypropylene |
| Support/Cage/End caps | Polypropylene |
| Diameter | Outer 152mm Inner 100mm |
| Lengths | 20" /40" /60 |
| Filtration Direction | Inside to outside |
| Sanitization | Hot water $\leq 85^{\circ}\text{C}$ @0.1MPa |
| Max. dP | 0.5 Mpa 25 $^{\circ}\text{C}$ |





1.10.3 High Flow Filter Cartridges

Ordering Information

HFL + ● ◆ ○

| + Ratings | ● Materials | ◆ Lengths | ○ Seals |
|-----------|-----------------|-------------|--------------|
| 1—1.0μm | PP-Pleated PP | 2---20 inch | S---Silicone |
| 3—3.0μm | PM-Meltblown PP | 4—40 inch | V---Viton |
| 5—5.0μm | GF-Glass Fibre | 6---60 inch | |
| 10—10μm | | | |
| 30—30μm | | | |
| 50k—50μm | | | |
| 80k—80μm | | | |

Order Example

PN: HFL5PP4S , HFL---High flow filter cartridges; Ratings: 5um; Materials: Pleated polypropylene; Lengths: 40 inch; Seals materials: Silicone

2 Filter Housings

Features and Benefits

- All filter housings are made of high quality stainless steel. Manufactured, pressure tested and inspected according to 《 the technical conditions of steel welded vessels 》
- All parts that are in contact with the products are made of SUS304 or US316L, the inner surface is polished, the outer surface is made of mechanical polishing, wire drawing, glass beaded and electrolysis. excellent durability and corrosion resistant.
- No dead ends, no leakage, removable and washable, convenient operation, ensure the quality standard to prevent bacterial contamination.

Typical Applications

- Electronic, chemical, power generation and others' liquid air /gas filtration.
- Food, fermentation, pharmaceutical partical and microorganism removal.



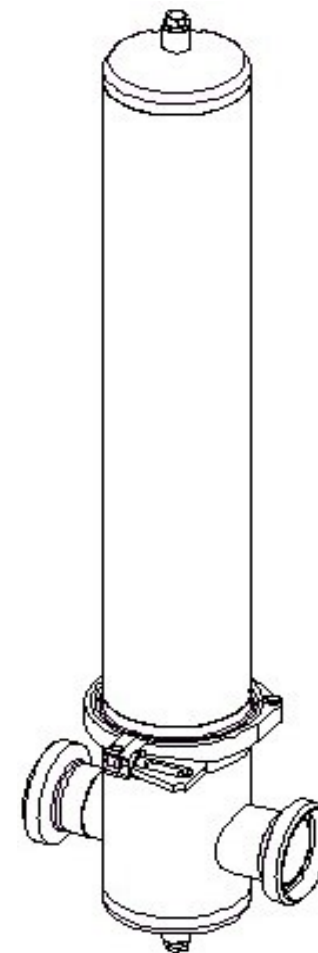
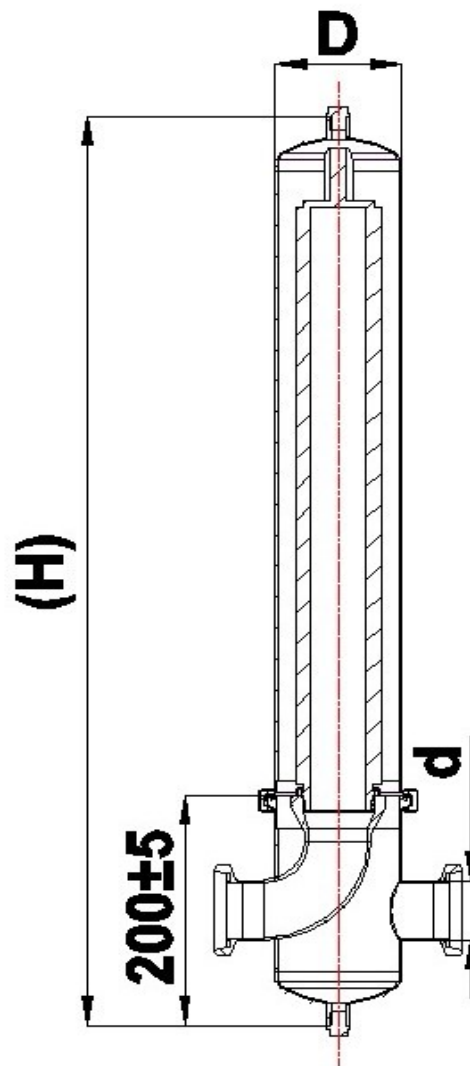
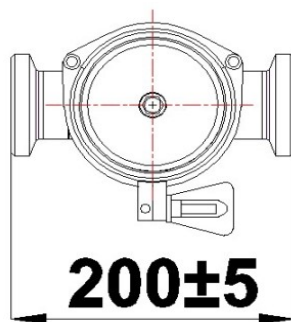


雷金过滤设备

2.1.1 Single Stack Gas Filter Housings

Technical Data

| Description | Information |
|--------------------|--------------------------|
| Design Pressure | 1.0MPa |
| Design Temperature | 140°C |
| Filtration Media | Air / Gas |
| Design Criteria | Food / Pharmaceutical |
| Cartridge Number | 1 |
| Adapter | 226 |





2.1.2 Single Stack Gas Filter Housings

Outline Dimension

| Stack | Inlet / Outlet | | Dimension Reference (mm) | | | | |
|-------|----------------|----------------------|--------------------------|----------------|-----|-----|------|
| | d(Φ) | Form | D(Φ) | H | | | |
| | | | | Specifications | | | |
| | | | | 5" | 10" | 20" | 30" |
| 1 | 52 | Ferrule Union Flange | 102 | 420 | 550 | 800 | 1050 |

Order Example: G1S10RDN50KEJ

G---Gas filter housings, **1**—Single stack, **S**—304 stainless steel, **10**—Length of cartridge 10", **R**---Inlet and outlet is union connection, **DN50**---Outer diameter 52 mm, **K**---Cylinder connected by ferrule, **E**---Material of o-ring is EPDM, **J**---Mirror polishing

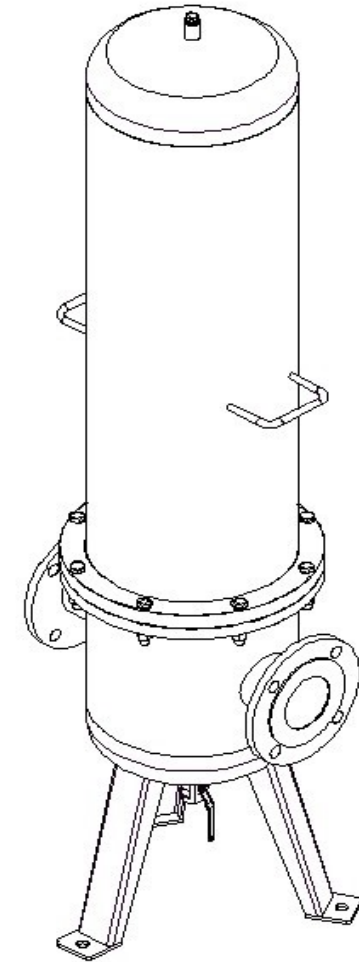
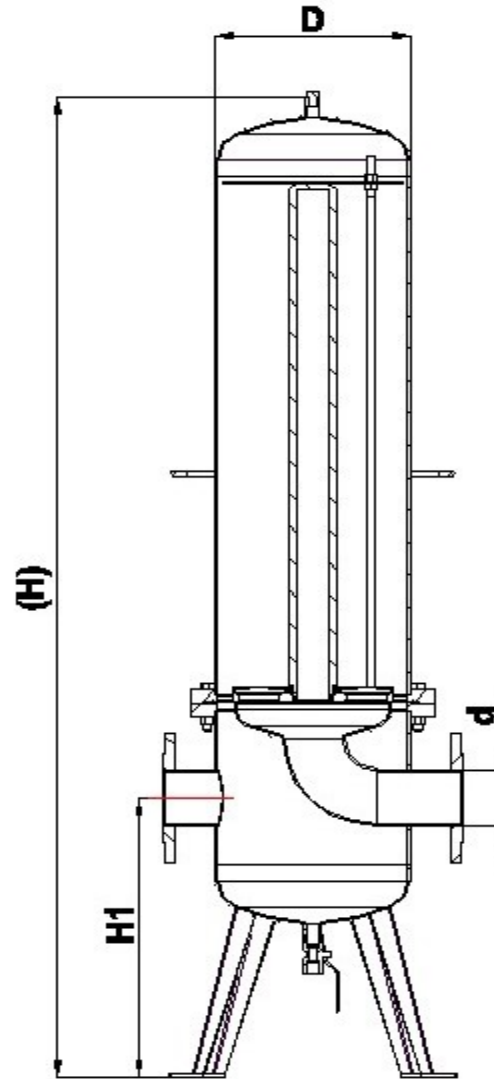
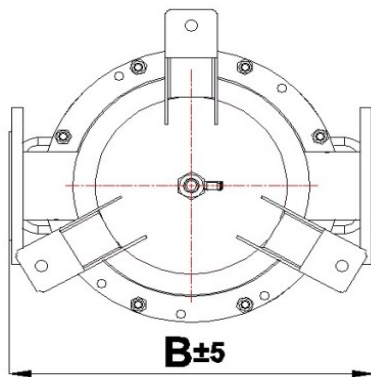


雷金过滤设备

2.2.1 Multi Stack Gas Filter Housings

Technical Data

| Description | Information |
|--------------------|-----------------------|
| Design Pressure | 1.0MPa |
| Design Temperature | 140°C |
| Filtration Media | Air / Gas |
| Design Criteria | Food / Pharmaceutical |
| Cartridge Number | 3-9 |
| Adapter | 226 |





雷金过滤设备

2.2.2 Multi Stack Gas Filter Housings

Outline Dimension

| Stack | Inlet / Outlet | | Dimension Reference (mm) | | | | | | |
|-------|----------------|--------------|--------------------------|-----|-----|----------------|------|------|------|
| | d(Φ) | Form | D(Φ) | B | H1 | H | | | |
| | | | | | | Specifications | | | |
| | | | | | | 10" | 20" | 30" | 40" |
| 3 | 85 | Union Flange | 220 | 360 | 250 | 728 | 978 | 1228 | 1478 |
| 5 | 85 | Union Flange | 250 | 390 | 250 | 750 | 1000 | 1250 | 1500 |
| 7 | 85 | Union Flange | 275 | 415 | 250 | 763 | 1013 | 1263 | 1513 |

Order Example : G5S10FDN100NEJ

G---Gas filter housings, **5**—5 stacks, **S**—304 stainless steel, **10**—Length of cartridge 10", **F**---Inlet and outlet is flange connection, **DN100**---Outer diameter 104 mm, **N**---Cylinder connected by normal bolts, **E**---Material of o-ring is EPDM, **J**---Mirror polishing

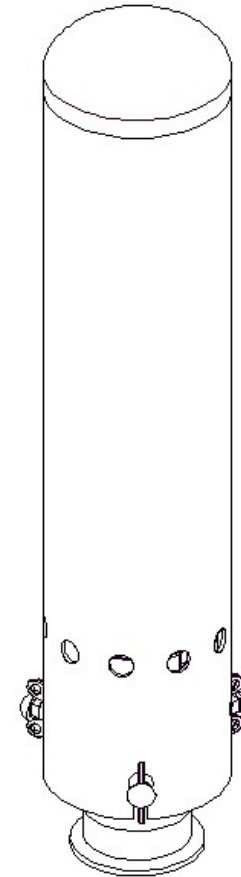
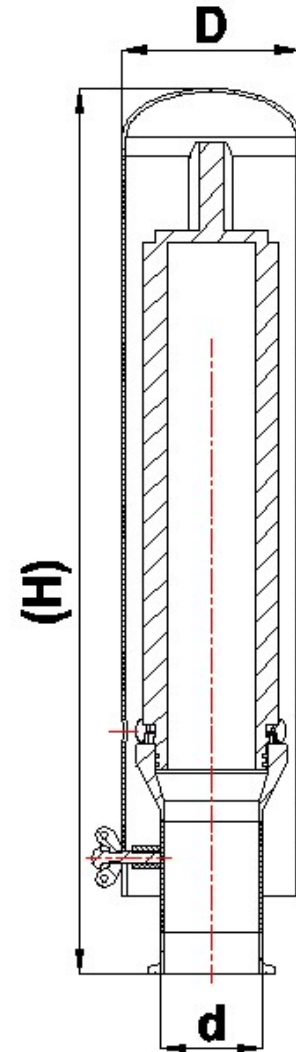
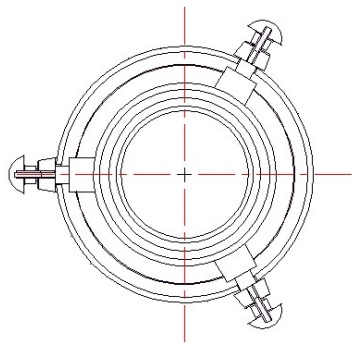


雷金过滤设备

2.3.1 Single Stack Venting Filter Housings

Technical Data

| Description | Information |
|--------------------|--------------------------|
| Design Pressure | --- |
| Design Temperature | 100°C |
| Filtration Media | Air / Gas |
| Design Criteria | Food / Pharmaceutical |
| Cartridge Number | 1 |
| Adapter | 226 |



2.3.2 Single Stack Venting Filter Housings

Outline Dimension

| Stack | Inlet / Outlet | | Dimension Reference (mm) | | | | |
|-------|----------------|--------------|--------------------------|----------------|-----|-----|-----|
| | d(Φ) | Form | D(Φ) | H | | | |
| | | | | Specifications | | | |
| | | | | 5" | 10" | 20" | 30" |
| 1 | 52 | Union Flange | 90 | 330 | 456 | 706 | 900 |

Order Example : **VG1S20RDN50**

VG---Venting filter housings, 1—1 stack, S—304 stainless steel, 20—Length of cartridge 20", R---Inlet and outlet is union connection, DN50---Outer diameter 52 mm

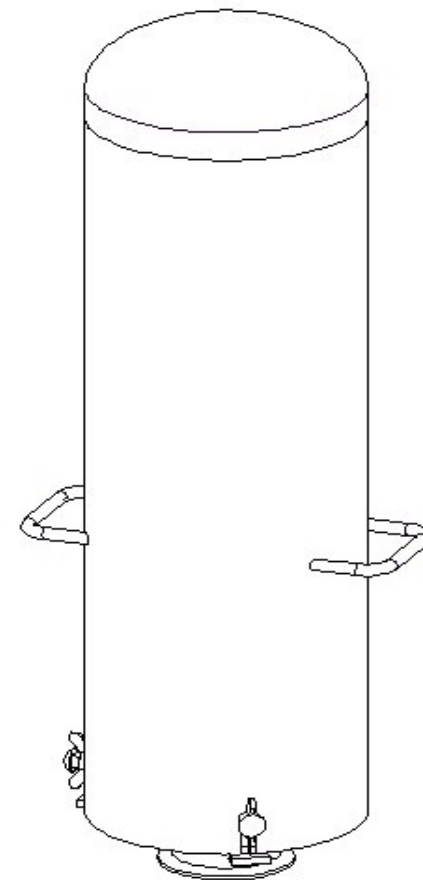
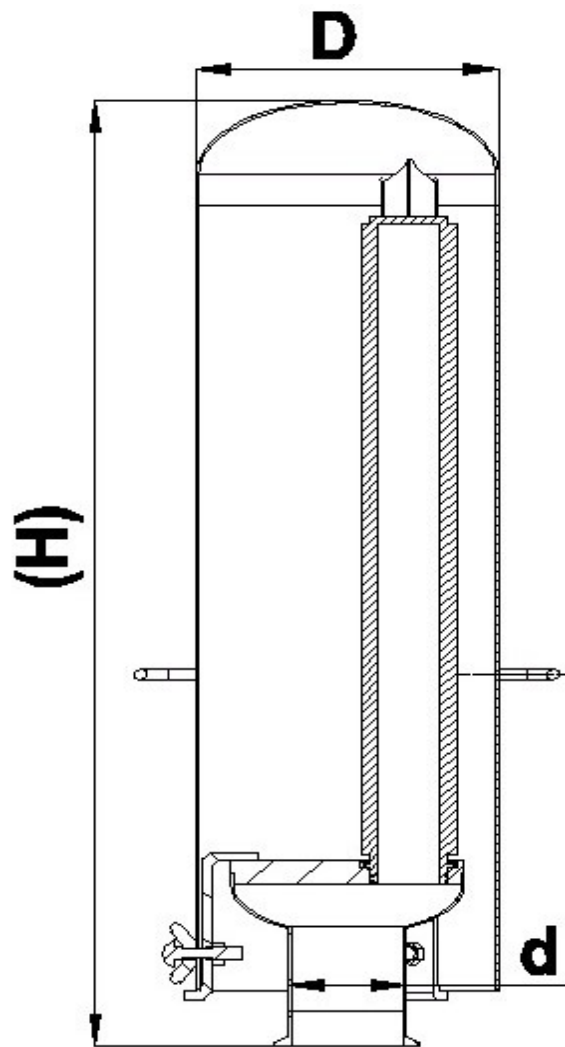
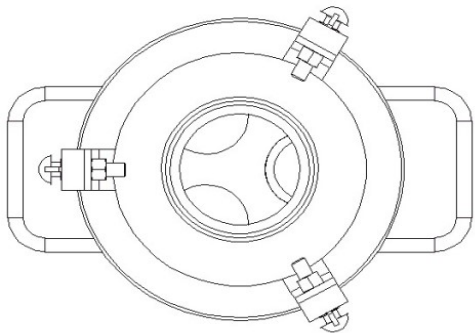


雷金过滤设备

2.4.1 Multi Stack Venting Filter Housings

Technical Data

| Description | Information |
|--------------------|---------------------|
| Design Pressure | --- |
| Design Temperature | 100°C |
| Filtration Media | Air / Gas |
| Design Criteria | Food/Pharmaceutical |
| Cartridge Number | 3-7 |
| Adapter | 226 |





2.4.2 Multi Stack Venting Filter Housings

Outline Dimension

| Stack | Inlet / Outlet | | Dimension Reference (mm) | | | | |
|-------|----------------|--------------|--------------------------|----------------|-----|-----|-----|
| | d(Φ) | Form | D(Φ) | H | | | |
| | | | | Specifications | | | |
| | | | | 5" | 10" | 20" | 30" |
| 3 | 85 | Union Flange | 220 | / | / | 746 | 996 |
| 5 | 85 | Union Flange | 275 | / | / | 746 | 996 |

Order Example : VG5S20RDN100

VG---Venting filter housings, **5**—5 stacks, **S**—304 stainless steel, **20**—Length of cartridge 20", **R**---Inlet and outlet is union connection, **DN100**---Outer diameter 104 mm

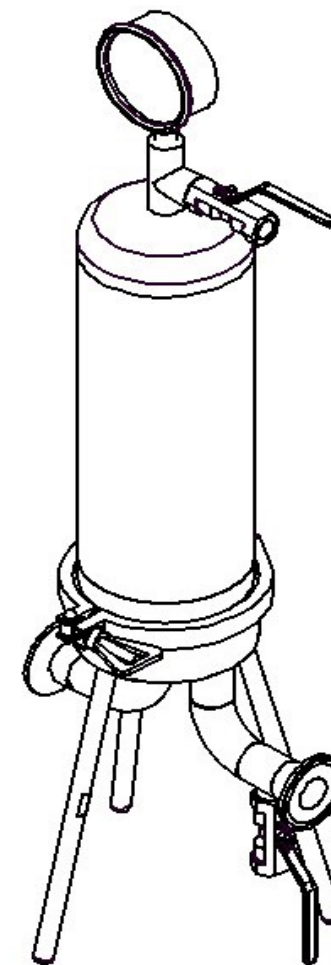
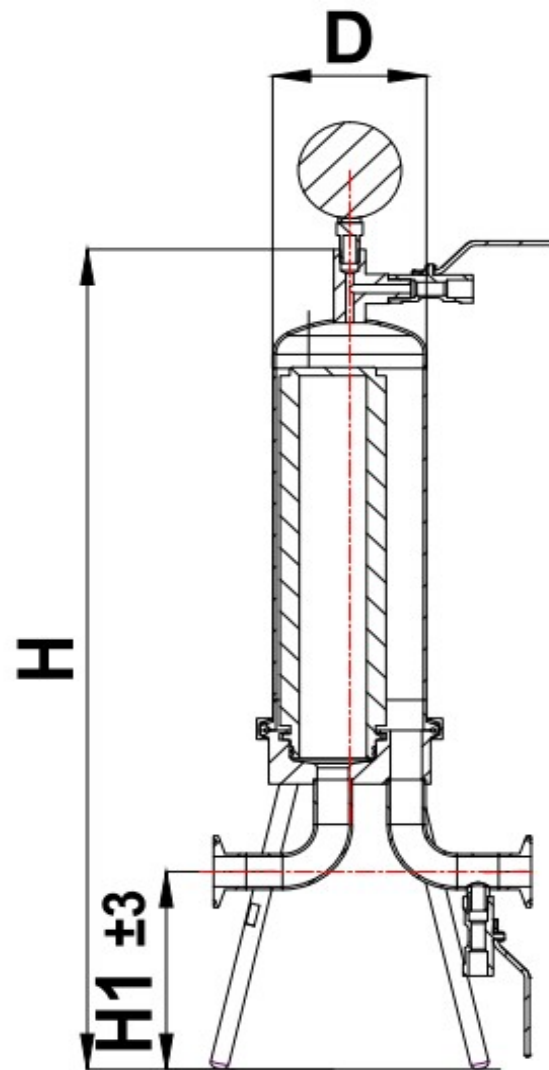
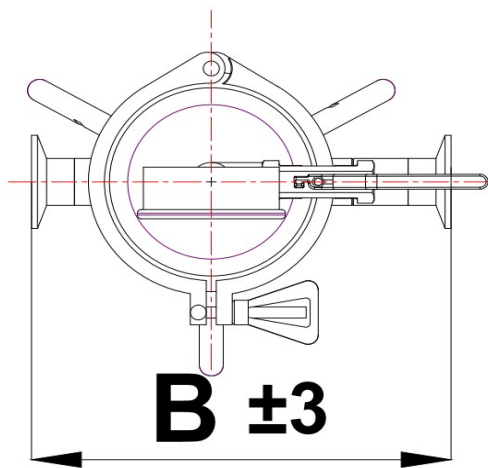


雷金过滤设备

2.5.1 Single Stack Liquid Filter Housings

Technical Data

| Discription | Information |
|--------------------|-------------|
| Design Pressure | 1.0MPa |
| Design Temperature | 140℃ |
| Filtration Media | Liquid |
| Design Criteria | Food |
| Cartridge Number | 1 |
| Adapter | 226 |





2.5.2 Single Stack Liquid Filter Housings

Outline Dimension

| Stack | Inlet / Outlet | | Dimension Reference (mm) | | | | | | |
|-------|----------------|---------------|--------------------------|-----|-----|----------------|-----|------|------|
| | d(Φ) | Form | D(Φ) | B | H1 | H | | | |
| | | | | | | Specifications | | | |
| | | | | | | 10" | 20" | 30" | 40" |
| 1 | 25.4 | Ferrule/Union | 102 | 210 | 140 | 617 | 867 | 1117 | 1367 |

Order Example : L1S20KISO25MJ

L---Liquid filter housings, 1—1 stack, S—304 stainless steel, 20—Length of cartridge 20", K---Inlet and outlet is ferrule connection, ISO25---Outer diameter 25.4 mm, M---Material of o-ring is Silicone, J---Mirror polishing

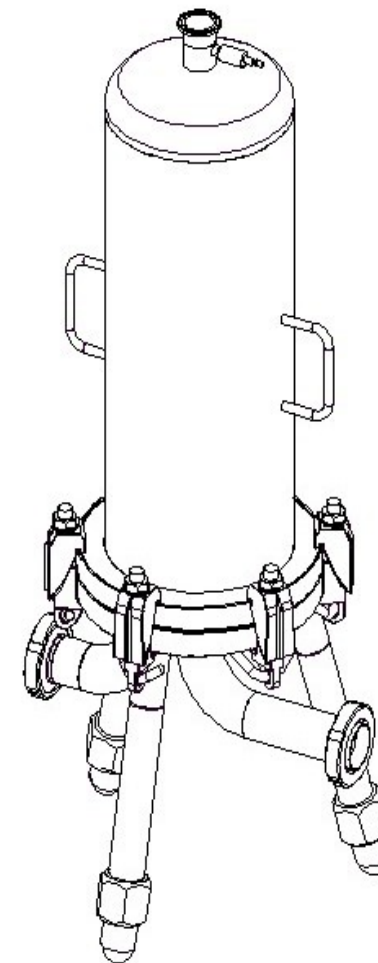
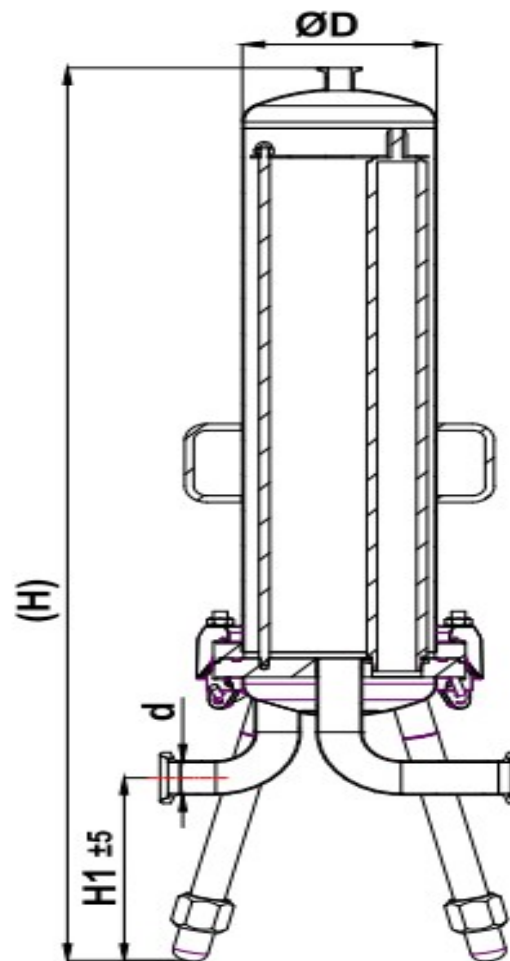
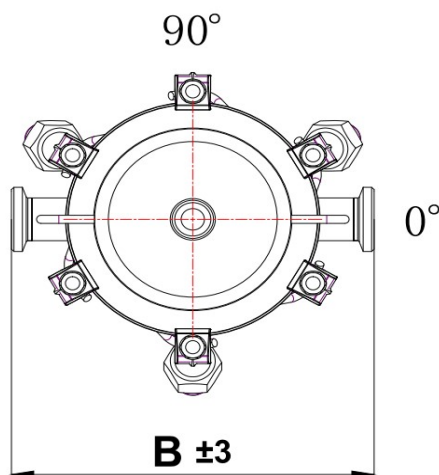


雷金过滤设备

2.6.1 DD-1R Liquid Filter Housings

Technical Data

| Discription | Information |
|--------------------|---------------------|
| Design Pressure | 1.0MPa |
| Design Temperature | 140°C |
| Filtration Media | Liquid |
| Design Criteria | Food/Pharmaceutical |
| Cartridge Number | 3-5 |
| Adapter | 226/222 |





2.6.2 DD-1R Liquid Filter Housings

Outline Dimension

| Stack | Inlet / Outlet | | Dimension Reference (mm) | | | | | |
|-------|----------------|----------------------|--------------------------|-----|-----|---------------|------|------|
| | d(Φ) | Form | D(Φ) | B | H1 | H | | |
| | | | | | | Specification | | |
| | | | | | | 20" | 30" | 40" |
| 3 | 52 | Ferrule Union Flange | 220 | 340 | 250 | 1043 | 1293 | 1543 |
| 5 | | Ferrule Union Flange | | | | | | |

Order Example: L3L30RDN50DDB1RMJ

L---Liquid filter housings, 3---3 stacks, L---316L stainless steel, 30---Length of cartridge 30", R---Inlet and outlet is union connection, DN50---Outer diameter 52 mm, DD---Bottom in and bottom out, B---Cylinder connected by claw, 1R---One flange, cartridge plate removable, M---Material of o-ring is Silicone, J---Mirror polishing

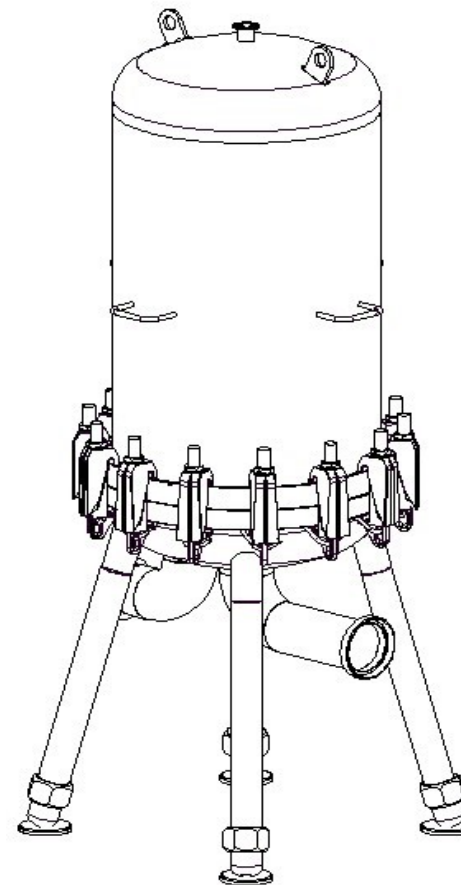
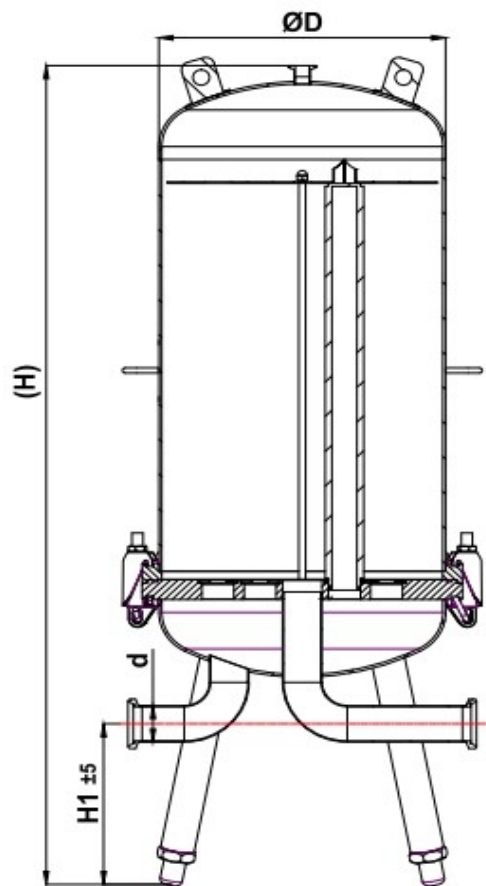
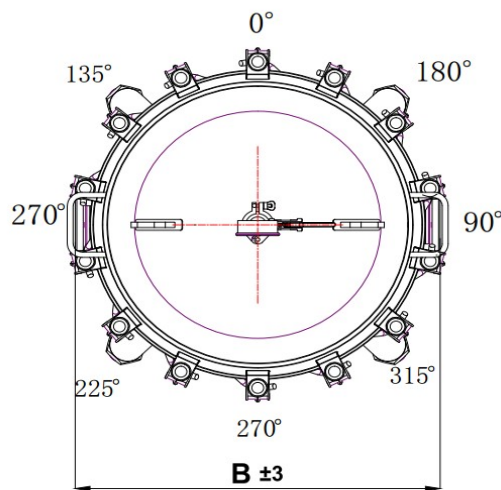


雷金过滤设备

2.7.1 DD-1W Liquid Filter Housings

Technical Data

| Discription | Information |
|--------------------|-------------|
| Design Pressure | 1.0MPa |
| Design Temperature | 140°C |
| Filtration Media | Liquid |
| Design Criteria | Normal |
| Cartridge Number | 3-36 |
| Adapter | 226/222 |





2.7.2 DD-1W Liquid Filter Housings

Outline Dimension

| Stack | Inlet / Outlet | | Dimension Reference (mm) | | | | | |
|-------|----------------|----------------------|--------------------------|-----|-----|---------------|------|------|
| | d(Φ) | Form | D(Φ) | B | H1 | H | | |
| | | | | | | Specification | | |
| | | | | | | 20" | 30" | 40" |
| 3 | 34 | Ferrule Union Flange | 200 | 320 | 250 | 1023 | 1273 | 1523 |
| 5 | 52 | Ferrule Union Flange | 220 | 340 | 250 | 1084 | 1334 | 1584 |
| 6 | 52 | Ferrule Union Flange | 250 | 370 | 250 | 1104 | 1354 | 1604 |
| 7 | 70 | Ferrule Union Flange | 275 | 395 | 290 | 1154 | 1404 | 1654 |
| 8 | 70 | Ferrule Union Flange | 300 | 420 | 290 | 1168 | 1418 | 1668 |
| 9 | 70 | Ferrule Union Flange | 325 | 445 | 290 | 1168 | 1418 | 1668 |
| 12 | 70 | Ferrule Union Flange | 350 | 470 | 290 | 1199 | 1449 | 1699 |
| 18 | 70 | Union Flange | 400 | 520 | 290 | 1223 | 1473 | 1723 |
| 23 | 70 | Union Flange | 450 | 590 | 300 | 1269 | 1519 | 1769 |
| 26 | 85 | Union Flange | 500 | 640 | 300 | 1310 | 1560 | 1810 |
| 30 | 104 | Union Flange | 550 | 690 | 300 | 1344 | 1594 | 1844 |
| 36 | 104 | Union Flange | 600 | 740 | 300 | 1370 | 1620 | 1870 |

Order Example: L18S30RDN80DDB1WMJ

L---Liquid filter housings, 18---18 stacks, S---304 stainless steel, 30---Length of cartridge 30", R---Inlet and outlet is union connection, DN80---Outer diameter 84 mm, DD---Bottom in and bottom out, B---Cylinder connected by claw, 1W---One flange, cartridge plate non removable, M---Material of o-ring is Silicone, J---Mirror polishing

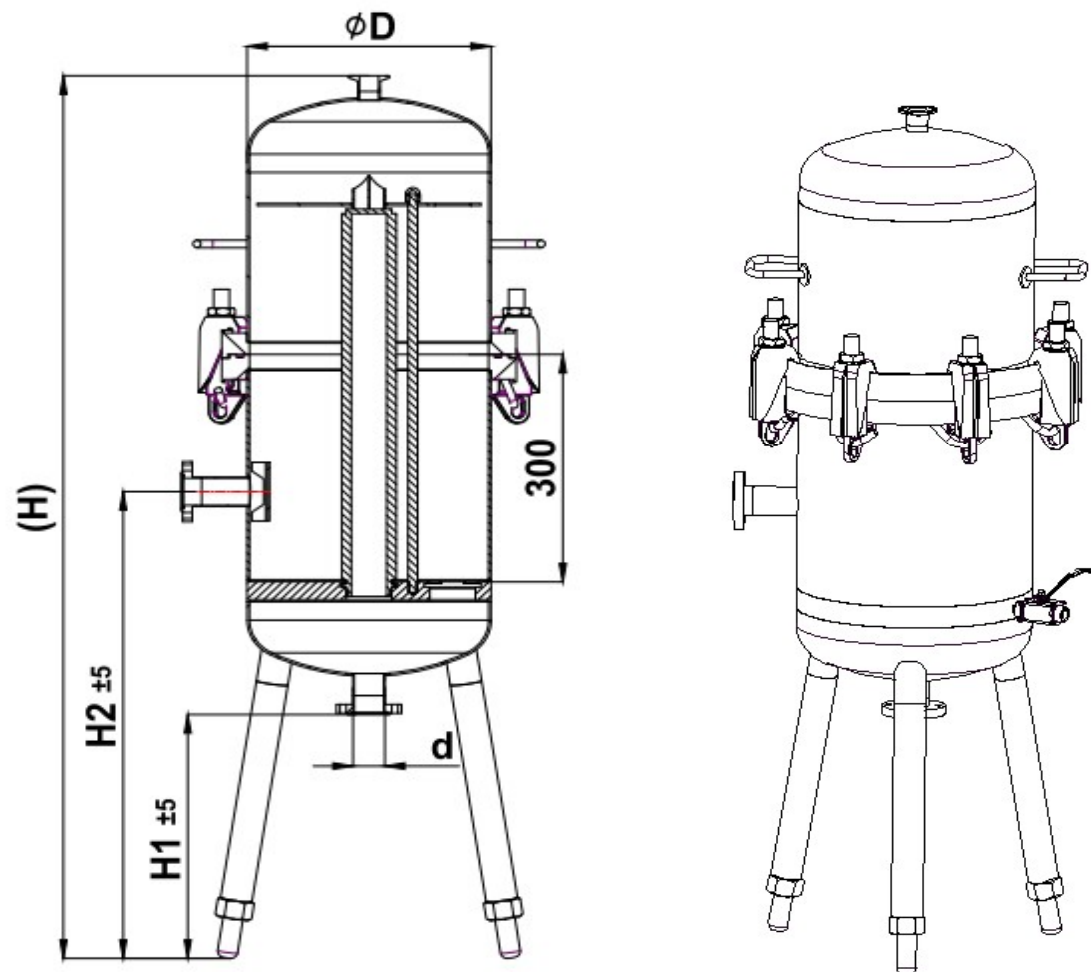
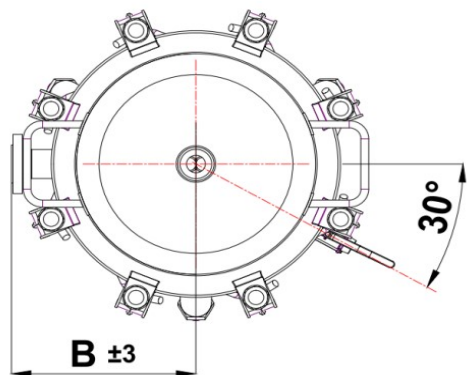


雷金过滤设备

2.8.1 CD-1W Liquid Filter Housings

Technical Data

| Discription | Information |
|--------------------|-------------|
| Design Pressure | 1.0MPa |
| Design Temperature | 140°C |
| Filtration Media | Liquid |
| Design Criteria | Normal |
| Cartridge Number | 3-12 |
| Adapter | 226/222 |





2.8.2 CD-1W Liquid Filter Housings

Outline Dimension

| Stack | Inlet / Outlet | | Dimension Reference (mm) | | | | | | |
|-------|----------------|----------------------|--------------------------|-----|-----|-----|----------------|------|------|
| | d(Φ) | Form | D(Φ) | B | H1 | H2 | H | | |
| | | | | | | | Specifications | | |
| | | | | | | | 20" | 30" | 40" |
| 3 | 34 | Ferrule Union Flange | 200 | 200 | 300 | 565 | 1065 | 1315 | 1565 |
| 4 | 52 | Ferrule Union Flange | 220 | 210 | 320 | 608 | 1130 | 1380 | 1630 |
| 5 | 52 | Ferrule Union Flange | 250 | 225 | 320 | 618 | 1150 | 1400 | 1650 |
| 7 | 70 | Ferrule Union Flange | 275 | 235 | 330 | 628 | 1160 | 1410 | 1660 |
| 8 | 70 | Ferrule Union Flange | 300 | 250 | 330 | 635 | 1175 | 1425 | 1675 |
| 11 | 70 | Ferrule Union Flange | 325 | 260 | 330 | 635 | 1175 | 1425 | 1675 |
| 12 | 70 | Ferrule Union Flange | 350 | 275 | 330 | 648 | 1200 | 1450 | 1700 |

Order Example: L12S30RDN65CDB1WMJ

L---Liquid filter housings, 12---12 stacks, S---304 stainless steel, 30---Length of cartridge 30", R---Inlet and outlet is union connection, DN65---Outer diameter 70 mm, CD---Side in and bottom out, B---Cylinder connected by claw, 1W---One flange, cartridge plate non removable, M---Material of o-ring is Silicone, J---Mirror polishing

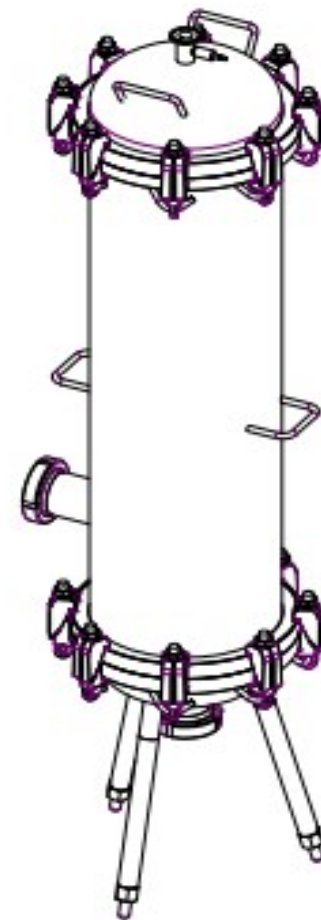
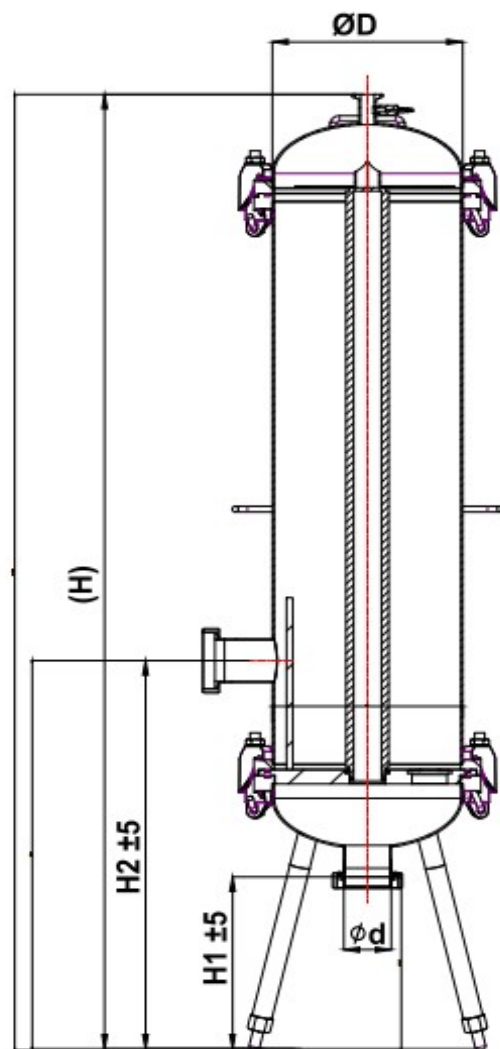
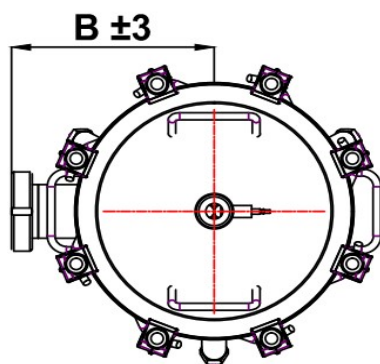


雷金过滤设备

2.9.1 CD-2R Liquid Filter Housings

Technical Data

| Description | Information |
|--------------------|--------------------------|
| Design Pressure | 1.0MPa |
| Design Temperature | 140°C |
| Filtration Media | Liquid |
| Design Criteria | Food / Pharmaceutical |
| Cartridge Number | 3-17 |
| Adapter | 226/222 |





雷金过滤设备

2.9.2 CD-2R Liquid Filter Housings

Outline Dimension

| Stack | Inlet / Outlet | | Dimension Reference (mm) | | | | | | |
|-------|----------------|----------------------|--------------------------|-----|-----|-----|----------------|------|------|
| | d(Φ) | Form | D(Φ) | B | H1 | H2 | H | | |
| | | | | | | | Specifications | | |
| | | | | | | | 20" | 30" | 40" |
| 3 | 34 | Ferrule Union Flange | 200 | 300 | 300 | 610 | 1035 | 1285 | 1535 |
| 4 | 52 | Ferrule Union Flange | 220 | 320 | | 648 | 1096 | 1346 | 1596 |
| 5 | 52 | Ferrule Union Flange | 250 | 350 | 320 | 658 | 1116 | 1366 | 1616 |
| 7 | 70 | Ferrule Union Flange | 275 | 375 | 320 | 708 | 1166 | 1416 | 1666 |
| 8 | 70 | Ferrule Union Flange | 300 | 400 | 330 | 715 | 1180 | 1430 | 1680 |
| 11 | 70 | Ferrule Union Flange | 325 | 425 | 330 | 715 | 1180 | 1430 | 1680 |
| 12 | 70 | Ferrule Union Flange | 350 | 450 | 330 | 732 | 1214 | 1464 | 1714 |
| 17 | 70 | Ferrule Union Flange | 400 | 500 | 330 | 744 | 1238 | 1488 | 1738 |

Order Example: L12S30RDN65CDB2RMJ

L---Liquid filter housings, 12—12 stacks, S—304 stainless steel, 30—Length of cartridge 30", R---Inlet and outlet is union connection, DN65---Outer diameter 70 mm, CD---Side in and bottom out, B---Cylinder connected by claw, 2R---Two flanges, cartridge plate removable, M---Material of o-ring is Silicone, J---Mirror polishing

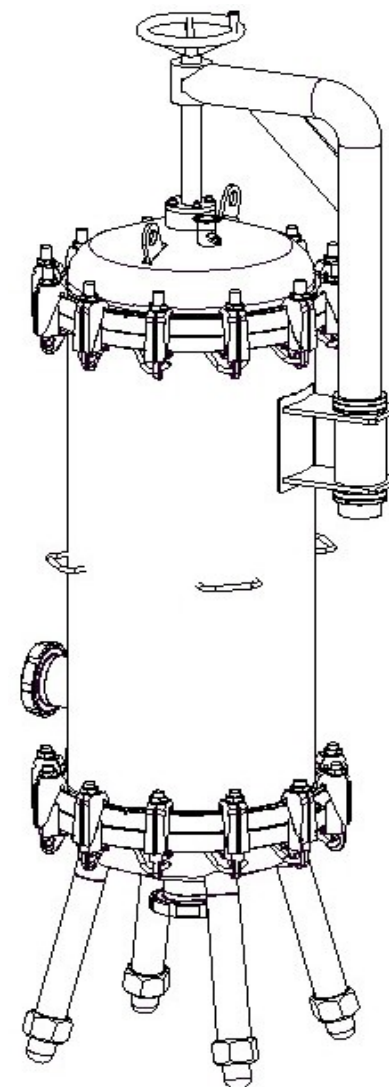
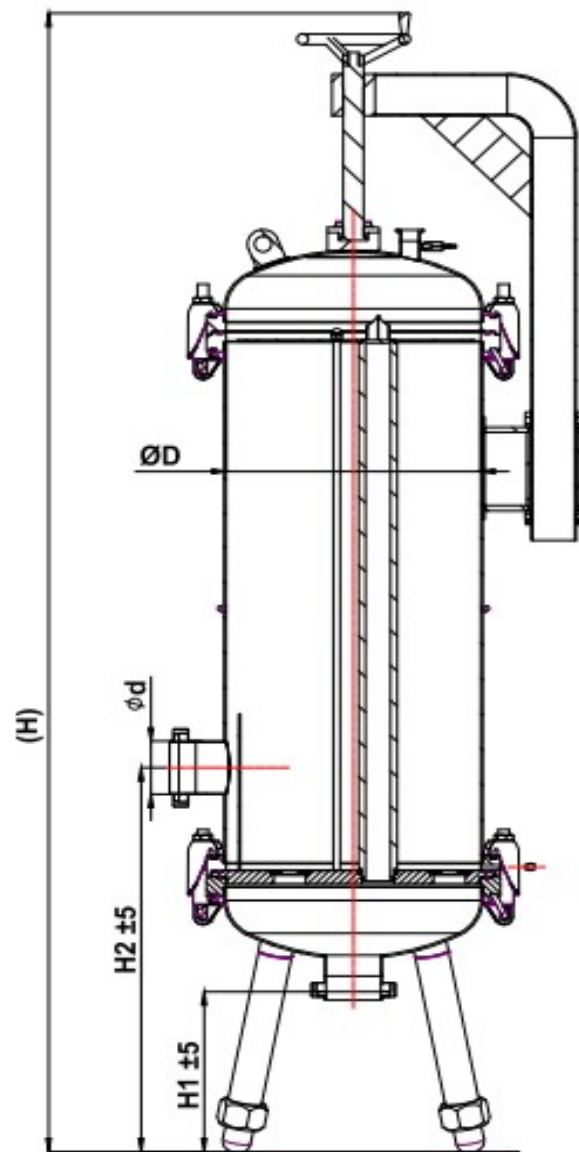
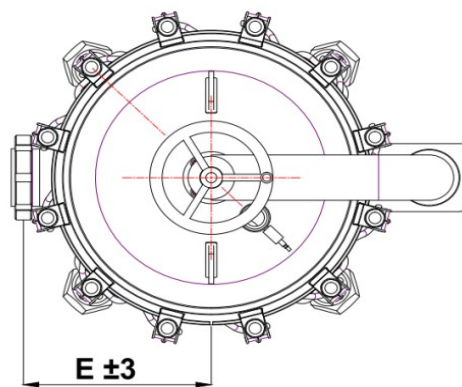


雷金过滤设备

2.10.1 CD-2R-T Liquid Filter Housings

Technical Data

| Discription | Information |
|--------------------|-----------------------|
| Design Pressure | 1.0MPa |
| Design Temperature | 140℃ |
| Filtration Media | Liquid |
| Design Criteria | Food / Pharmaceutical |
| Cartridge Number | 22-55 |
| Adapter | 226/222 |





2.10.2 CD-2R-T Liquid Filter Housings

Outline Dimension

| Stack | Inlet / Outlet | | Dimension Reference (mm) | | | | | | |
|-------|----------------|----------------------|--------------------------|-----|-----|-----|----------------|------|------|
| | d(Φ) | Form | D(Φ) | B | H1 | H2 | H | | |
| | | | | | | | Specifications | | |
| | | | | | | | 20" | 30" | 40" |
| 22 | 70 | Ferrule Union Flange | 450 | 570 | 380 | 796 | 1700 | 1950 | 2200 |
| 27 | 85 | Union Flange | 500 | 620 | 390 | 825 | 1750 | 2000 | 2250 |
| 35 | 104 | Union Flange | 550 | 670 | 400 | 847 | 1784 | 2034 | 2284 |
| 39 | 104 | Union Flange | 600 | 720 | 400 | 860 | 1850 | 2100 | 2350 |
| 46 | 104 | Union Flange | 650 | 770 | 400 | 872 | 1874 | 2124 | 2374 |
| 55 | 129 | Flange | 700 | 820 | 425 | 910 | 1925 | 2175 | 2425 |

Order Example: L35S30RDN65CDB2RMJT

L---Liquid filter housings, 35---35 stacks, S---304 stainless steel, 30---Length of cartridge 30", R---Inlet and outlet is union connection, DN65---Outer diameter 70 mm, CD---Side in and bottom out, B---Cylinder connected by claw, 2R---Two flanges, cartridge plate removable, M---Material of o-ring is Silicone, J---Mirror polishing, T---Housing cover lift device

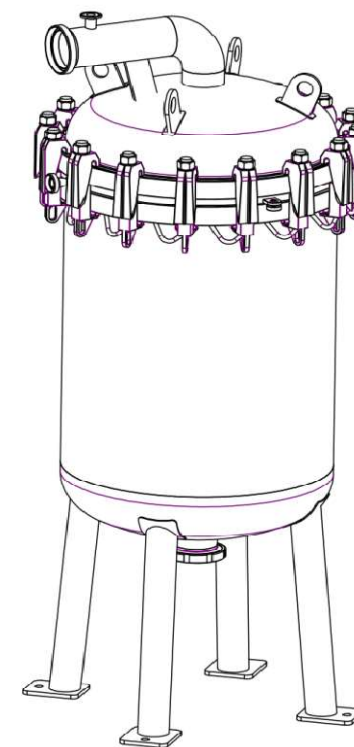
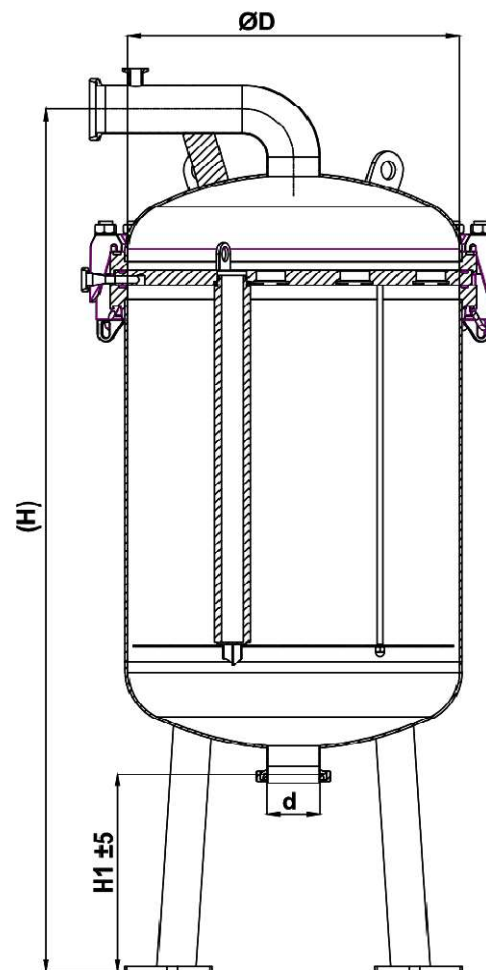
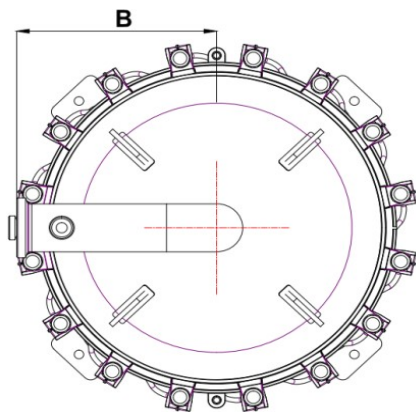


雷金过滤设备

2.11.1 DS-1R Liquid Filter Housings

Technical Data

| Description | Information |
|--------------------|-------------|
| Design Pressure | 1.0MPa |
| Design Temperature | 140°C |
| Filtration Media | Liquid |
| Design Criteria | Food |
| Cartridge Number | 18-52 |
| Adapter | 226 |





雷金过滤设备

2.11.2 DS-1R Liquid Filter Housings

Outline Dimension

| Stack | Inlet / Outlet | | Dimension Reference (mm) | | | | | |
|-------|----------------|----------------------|--------------------------|-----|-----|----------------|------|------|
| | d(Φ) | Form | D(Φ) | B | H1 | H | | |
| | | | | | | Specifications | | |
| | | | | | | 20" | 30" | 40" |
| 18 | 70 | Ferrule Union Flange | 400 | 275 | 380 | 1390 | 1640 | 1890 |
| 23 | 70 | Ferrule Union Flange | 450 | 300 | 380 | 1413 | 1663 | 1913 |
| 26 | 85 | Union Flange | 500 | 325 | 390 | 1466 | 1716 | 1966 |
| 30 | 104 | Union Flange | 550 | 350 | 400 | 1510 | 1760 | 2010 |
| 36 | 104 | Union Flange | 600 | 375 | 400 | 1535 | 1785 | 2035 |
| 46 | 104 | Union Flange | 650 | 400 | 400 | 1560 | 1810 | 2060 |
| 52 | 129 | Flange | 700 | 425 | 425 | 1635 | 1885 | 2135 |

Order Example: L31S30RDN100DSB1RMJ

L---Liquid filter housings, 31---31 stacks, S---304 stainless steel, 30---Length of cartridge 30", R---Inlet and outlet is union connection, DN100---Outer diameter 104 mm, DS---Bottom in and top out, B---Cylinder connected by claw, 1R---One flange, cartridge plate removable, M---Material of o-ring is Silicone, J---Mirror polishing

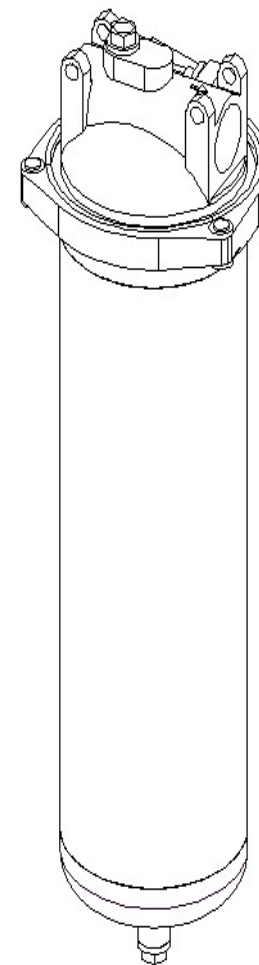
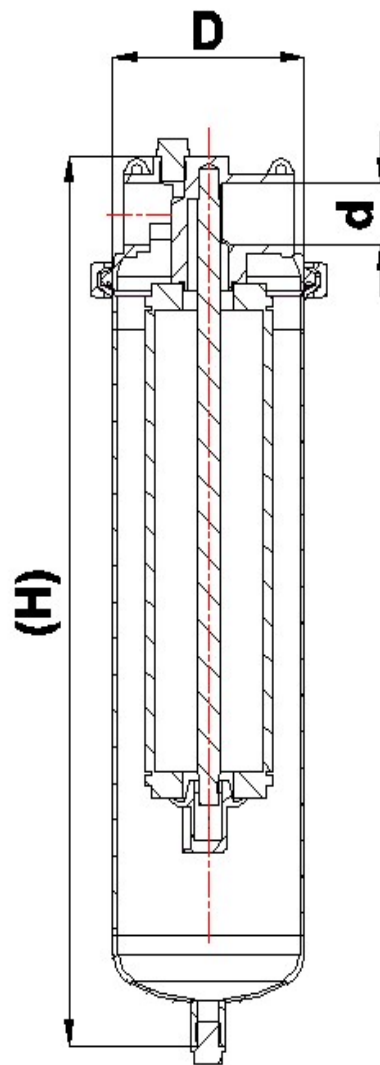
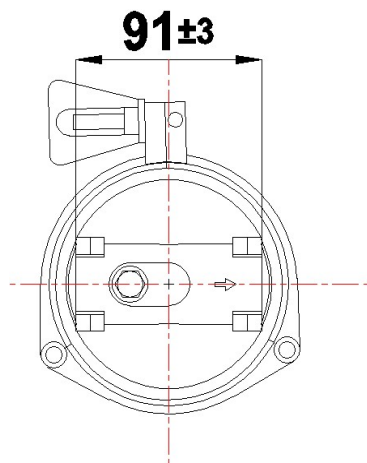


雷金过滤设备

2.12.1 D-Cast Head Filter Housings

Technical Data

| Description | Information |
|--------------------|-------------|
| Design Pressure | 1.0MPa |
| Design Temperature | 140°C |
| Filtration Media | Liquid |
| Design Criteria | Food |
| Cartridge Number | 1 |
| Adapter | DOE |





2.12.2 D-Cast Head Filter Housings

Outline Dimension

| Inlet / Outlet | | Dimension Reference (mm) | | | | |
|----------------|-----------------|--------------------------|----------------|-----|-----|-----|
| d(Φ) | Form | D(Φ) | H | | | |
| | | | Specifications | | | |
| | | | 5" | 10" | 20" | 30" |
| 1" | Internal thread | 102 | 270 | 400 | 650 | 900 |

Order Example : D1S10G25EP

D---Cast head filter housings, **1**—1 stack, **S**—304 stainless steel , **10**—Length of cartridge 10", **G25**--- Inlet and outlet is internal thread 1"BSPT, **E**--- Material of o-ring is EPDM, **P**--- Glass beaded and Electrolysis

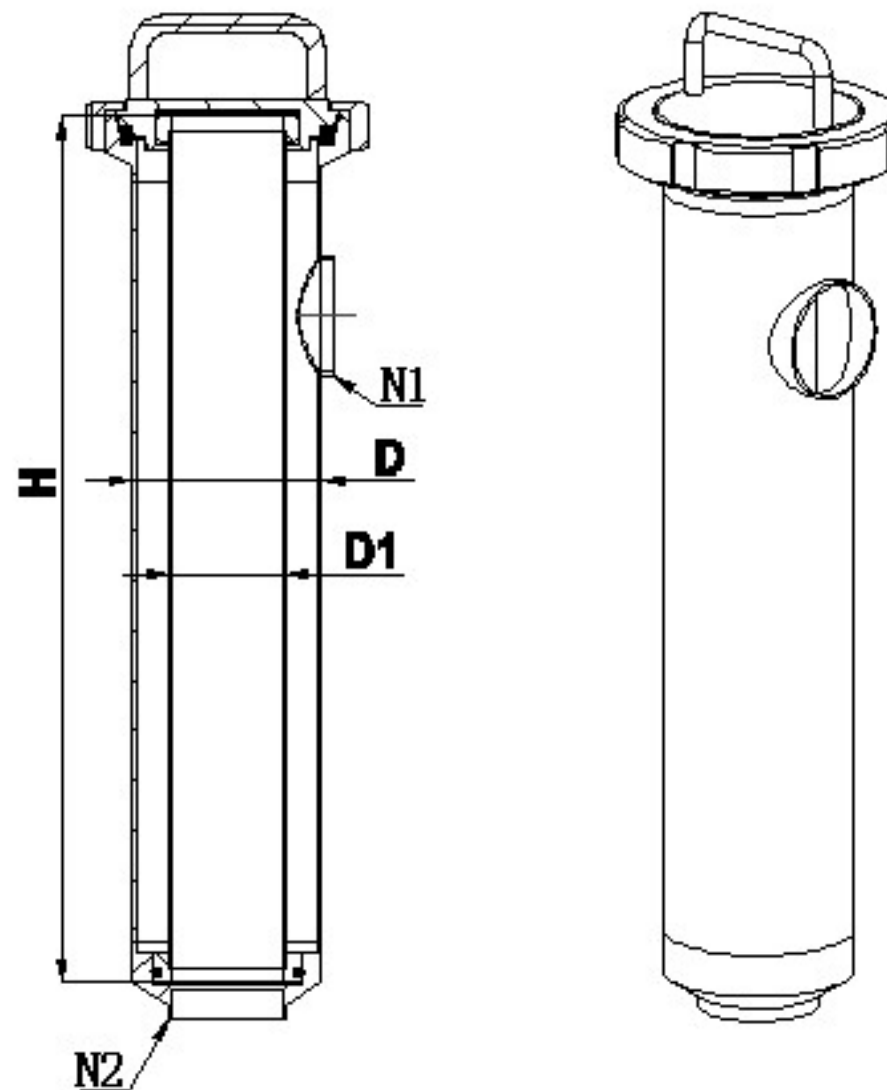
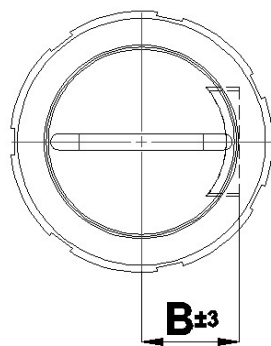


雷金过滤设备

2.13.1 Strainer Filter Housings

Technical Data

| Discription | Information |
|--------------------|-------------|
| Design Pressure | 1.0MPa |
| Design Temperature | 140°C |
| Filtration Media | Liquid |
| Design Criteria | Food |
| Cartridge Number | 1 |
| Adapter | |





雷金过滤设备

2.13.2 Strainer Filter Housings

Outline Dimension

| Strainer Sizing | | | | |
|-----------------|---------------------|--------------------|---------------|----------|
| Water flow/t/hr | In and Outlet N1/N2 | Housing Diameter D | Strainer D1*H | Ratings |
| 60 | DN100 | ∅ 154 | ∅ 100*800 | 200 mesh |
| 50 | DN100/80 | ∅ 129 | ∅ 80*700 | |
| 40 | DN80/65 | ∅ 129 | ∅ 80*625 | |
| 30 | DN80/65 | ∅ 129 | ∅ 80*580 | |
| 20 | DN65/50 | ∅ 102 | ∅ 70*320 | |
| 10 | DN50/32 | ∅ 102 | ∅ 70*240 | |
| 5 | DN32/25 | ∅ 102 | ∅ 70*170 | |

Housing: RT 80/700 S R DN 100 E J

Strainer: W 200M 80/700 S T E

RT-Strainer filter housings

80/700- Strainer diameter/length

S-304 L-316L

R-Union; K-Ferrule; F-Flange; H-Welded

DN100-In and outlet (SMS、ISO)

E-Material of seals (M、V、N)

J-Mirror polishing

W-Wedge mesh; B-Wire mesh

200M-Rating 200 mesh

80/700-Strainer diameter/length

S-304; L-316L

T-Flow out to in; H-Flow in to out

E-Material of seals (M、V、N)

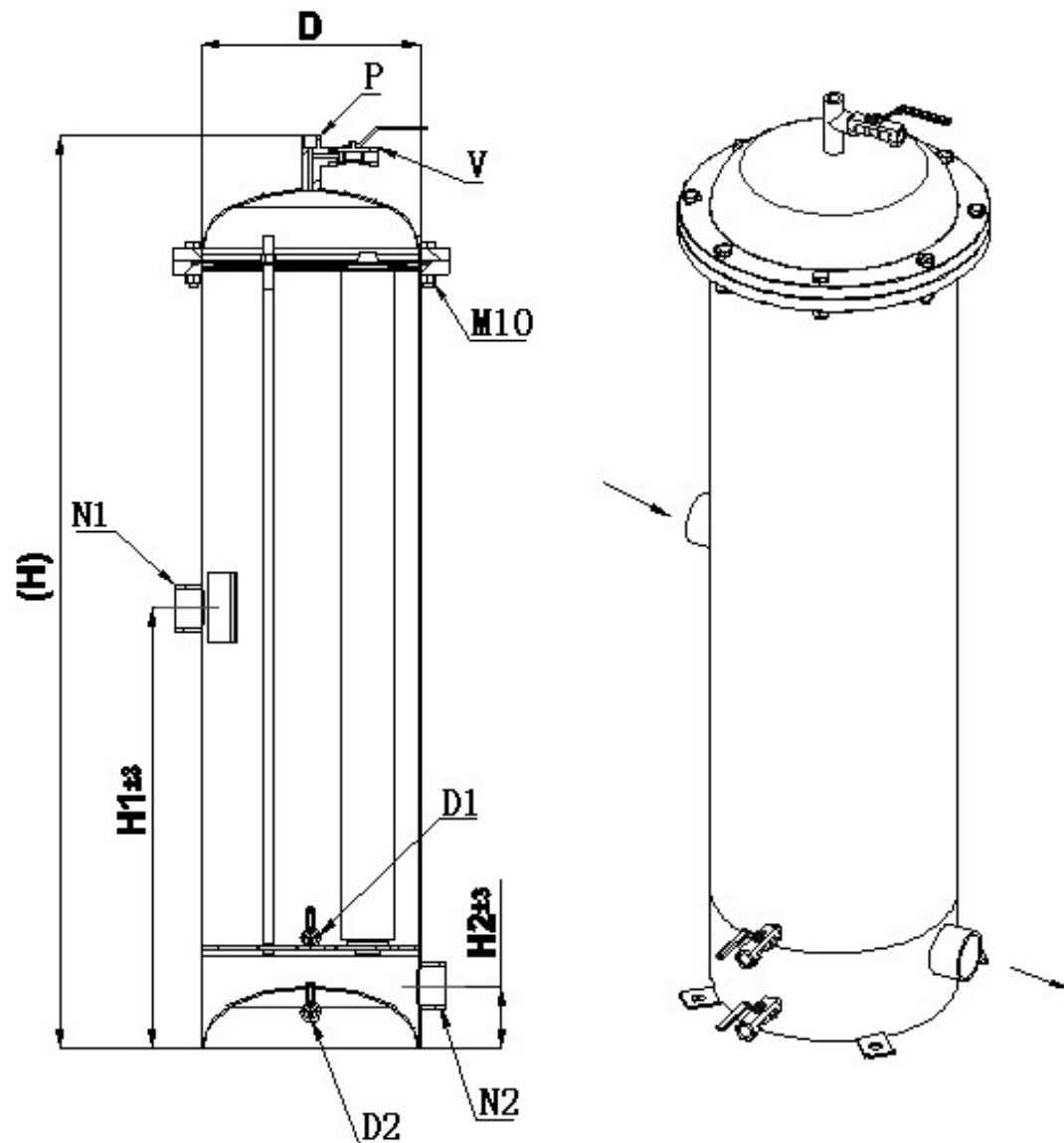
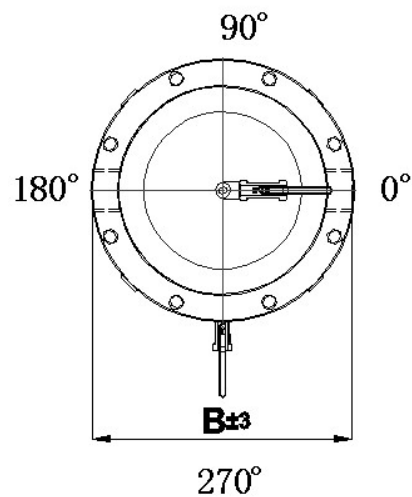


雷金过滤设备

2.14.1 Safety Filter Housings

Technical Data

| Discription | Information |
|--------------------|-------------|
| Design Pressure | 1.0MPa |
| Design Temperature | 140°C |
| Filtration Media | Liquid |
| Design Criteria | Industry |
| Cartridge Number | 3-48 |
| Adapter | DOE |





雷金过滤设备

2.14.2 Safety Filter Housings

Outline Dimension

| Stack | Inlet and Outlet | | Dimension Reference (mm) | | | | | |
|-------|------------------|-----------------|--------------------------|-----|----|----------------|---------|----------|
| | N(Φ) | Form | D(Φ) | B | H2 | H1/H | | |
| | | | | | | Specifications | | |
| | | | | | | 20" | 30" | 40" |
| 3 | G1 | Internal thread | 180 | 280 | 90 | 350/610 | 400/920 | --- |
| 5 | G1-1/4 | Internal thread | 200 | 320 | 90 | 350/610 | 400/920 | 500/1180 |
| 7 | G1-1/2 | Internal thread | 250 | 370 | 90 | 350/610 | 400/920 | 500/1180 |
| 9 | G1-1/2 | Internal thread | 280 | 400 | 90 | 350/610 | 400/920 | 500/1200 |
| 12 | G2 | Internal thread | 300 | 430 | 90 | 350/610 | 400/920 | 500/1200 |
| 15 | G2 | Internal thread | 350 | 480 | 90 | 350/610 | 400/920 | 500/1200 |
| 19 | G2-1/2 | Internal thread | 375 | 500 | 90 | --- | 400/920 | 500/1200 |
| 21 | G2-1/2 | Internal thread | 400 | 530 | 90 | --- | 400/920 | 500/1200 |
| 25 | G3 | Internal thread | 450 | 550 | 90 | --- | 400/920 | 500/1200 |
| 30 | G3 | Internal thread | 475 | 580 | 00 | --- | 400/920 | 500/1200 |

Order Example : L9S40G1-1/2

L--- Liquid filter housings , 9—9 stacks, S—304 stainless steel , 40--- Length of cartridge 40", G1-1/2--- Inlet and outlet is internal thread 1.5"

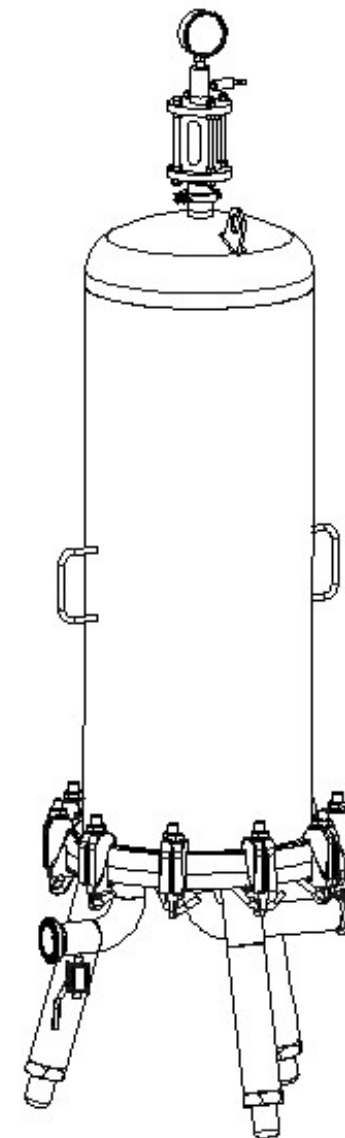
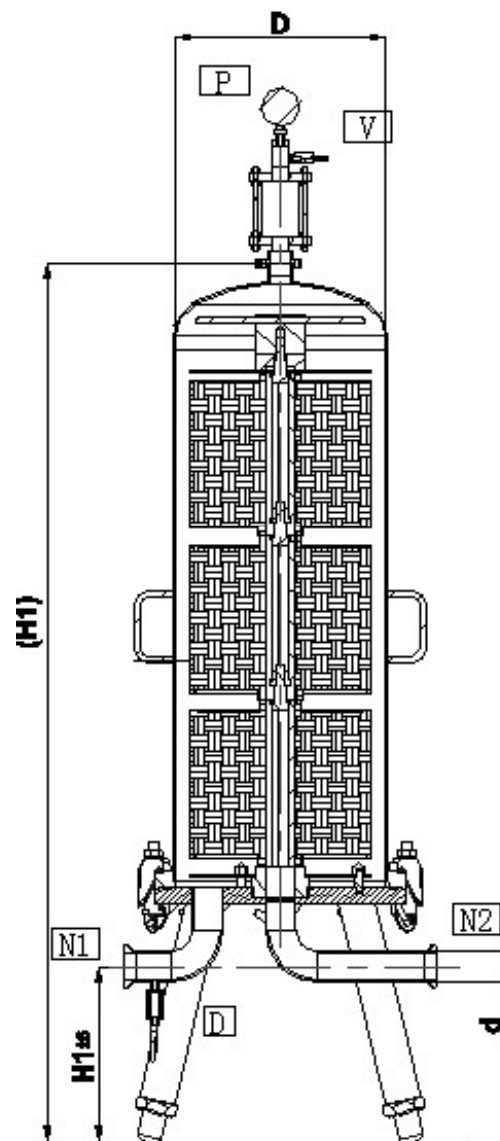
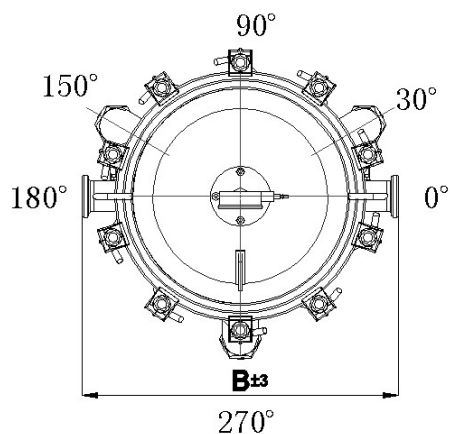


雷金过滤设备

2.15.1 Module Filter Housings

Technical Data

| Discription | Information |
|--------------------|---------------------|
| Design Pressure | 1.0MPa |
| Design Temperature | 140°C |
| Filtration Media | Liquid |
| Design Criteria | Food/Pharmaceutical |
| Module Number | 1-4 |
| Module Adapter | DOE |



2.15.2 Module Filter Housings

Outline Dimension

| Module Diameter | Module Number | Inlet and Outlet | | Dimension Reference (mm) | | | |
|-----------------|---------------|------------------|---------------|--------------------------|-----|-----|------|
| | | N(Φ) | Form | D(Φ) | B | H1 | H |
| 12" | 1 | 38 | Ferrule/Union | 325 | 600 | 270 | 860 |
| | 2 | 38 | Ferrule/Union | 325 | 600 | 270 | 1160 |
| | 3 | 38 | Ferrule/Union | 325 | 600 | 270 | 1460 |
| | 4 | 38 | Ferrule/Union | 325 | 600 | 270 | 1760 |
| 16" | 1 | 52 | Ferrule/Union | 450 | 640 | 270 | 900 |
| | 2 | 52 | Ferrule/Union | 450 | 640 | 270 | 1200 |
| | 3 | 52 | Ferrule/Union | 450 | 640 | 270 | 1500 |
| | 4 | 52 | Ferrule/Union | 450 | 640 | 270 | 1800 |

Order Example : M2S12KDN38EJ

M---Module filter housings, 2—2 modules, S—304 stainless steel , 12---module diameter 12" , K---
 Inlet and outlet is ferrule, DN38----Outside diameter 38, E--- Material of o-ring is EPDM , J---- Mirror
 polishing

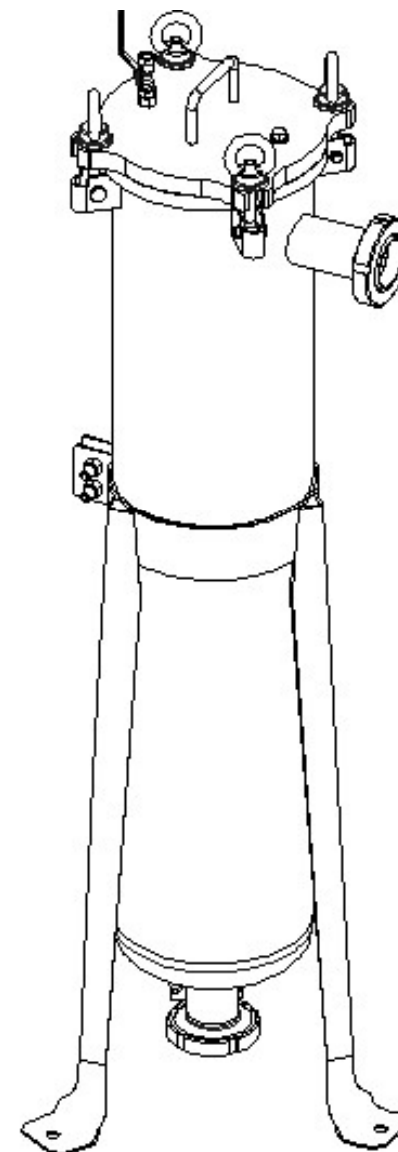
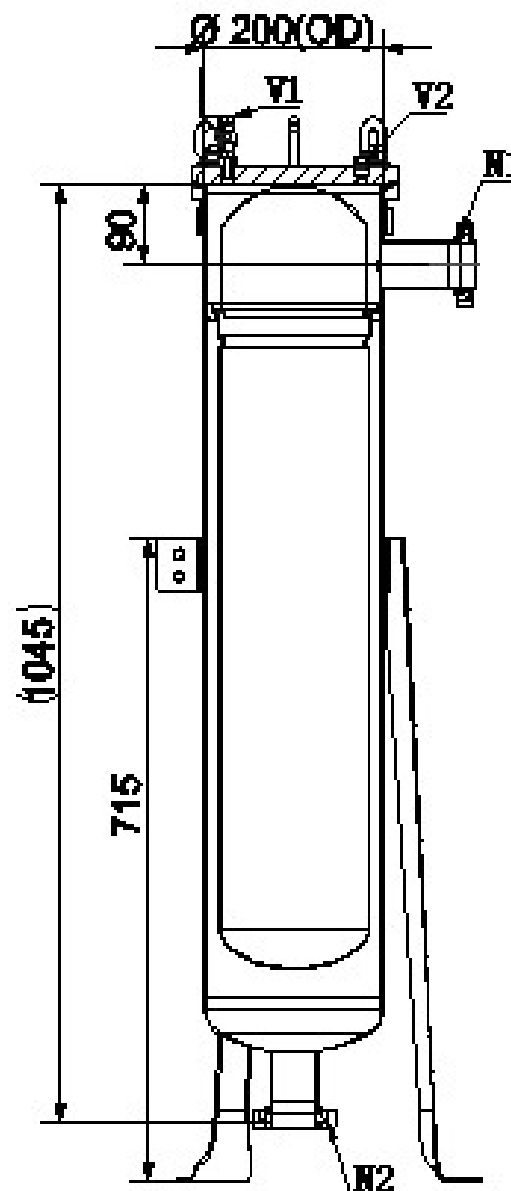
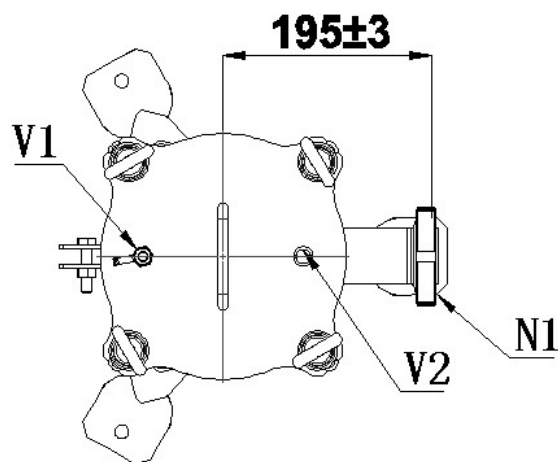


雷金过滤设备

2.16.1 Single Bag Filter Housings

Technical Data

| Discription | Information |
|--------------------|---------------------|
| Design Pressure | 1.0MPa |
| Design Temperature | 140°C |
| Filtration Media | Liquid |
| Design Criteria | Food/Pharmaceutical |
| Bag Number | 1 |
| Bag Type | 2# |



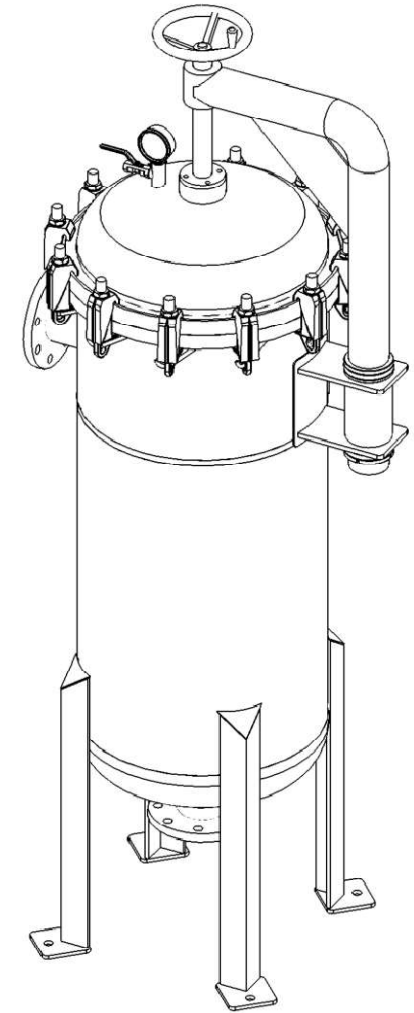
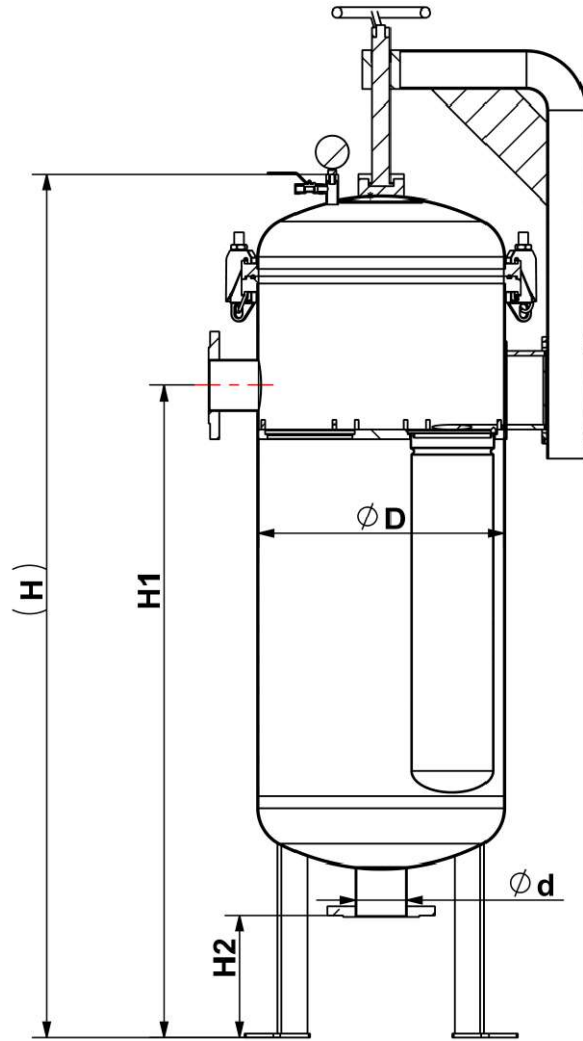
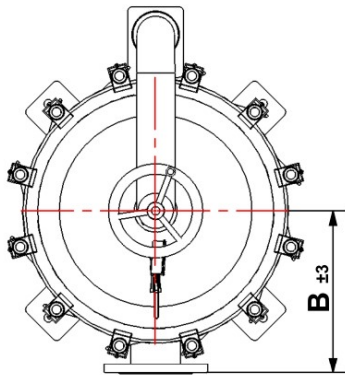


雷金过滤设备

2.17.1 Multi-Bag Filter Housings

Technical Data

| Description | Information |
|--------------------|---------------------|
| Design Pressure | 1.0MPa |
| Design Temperature | 140°C |
| Filtration Media | Liquid |
| Design Criteria | Food/Pharmaceutical |
| Bag Number | 2-12 |
| Bag Type | 2# |



2.17.2 Multi-Bag Filter Housings

Outline Dimension

| Bag Number | Inlet and Outlet | | Dimension Reference (mm) | | | | |
|------------|------------------|---------------|--------------------------|-----|------|-----|-----|
| | d(Φ) | Form | D(Φ) | B | H | H1 | H2 |
| 3 | 80 | Union /Flange | 500 | 370 | 1800 | 400 | 520 |
| 4 | 100 | Union /Flange | 550 | 390 | 1900 | 450 | 540 |
| 5 | 150 | Union /Flange | 600 | 420 | 2100 | 600 | 550 |
| 7 | 150 | Union /Flange | 650 | 440 | 2200 | 600 | 570 |
| 8 | 200 | Union /Flange | 700 | 470 | 2400 | 800 | 580 |

Order Example : RB3S2RDN80CDBMJT

RB---Bag filter housings, 3—3 Bags, S—304 stainless steel, R--- Inlet and outlet is union, DN80--- Outside diameter 85, CD---Side in bottom out, B---Connected by claw, M--- Material of o-ring is silicon, J--- Mirror polishing , T---With lift device

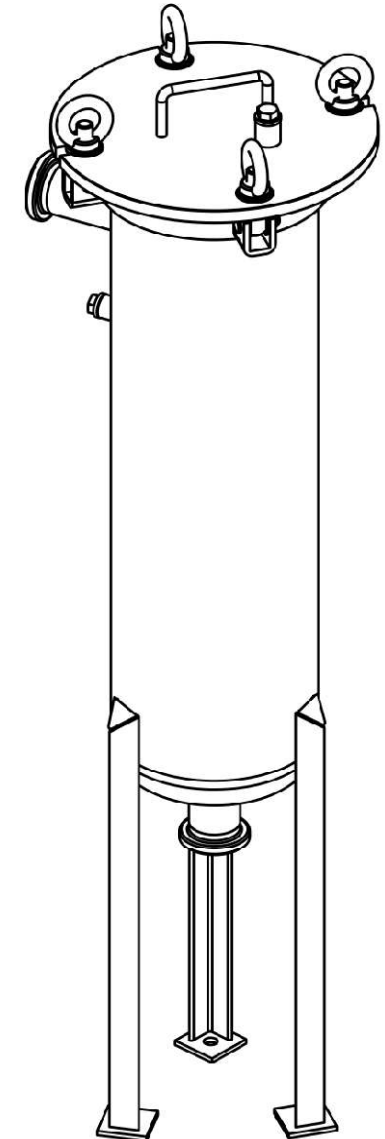
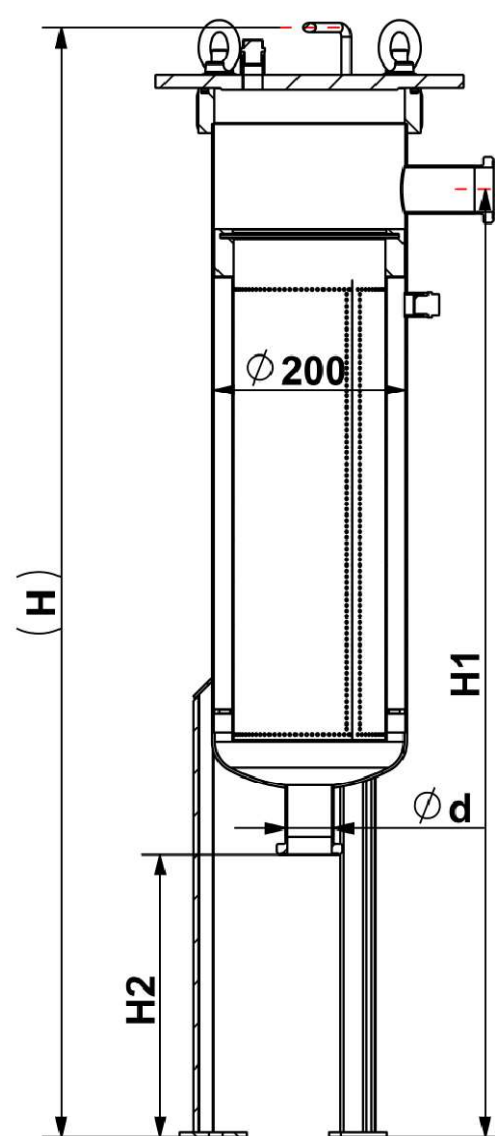
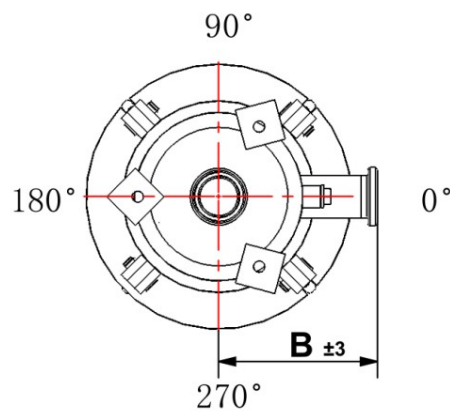


雷金过滤设备

2.18.1 High Flow Filter Housings - Horizontal

Technical Data

| Discription | Information |
|--------------------|---------------------|
| Design Pressure | 1.0MPa |
| Design Temperature | 140°C |
| Filtration Media | Liquid |
| Design Criteria | Food/Pharmaceutical |
| Cartridge Number | 1-7 |
| Cartridge Type | High flow |





2.18.2 High Flow Filter Housings - Horizontal

Outline Dimension

| Cartridge Number | Inlet and Outlet | | Dimension Reference (mm) | | | | | |
|------------------|------------------|----------------|--------------------------|-----|-----|----------------|------|------|
| | d(Φ) | Form | D(Φ) | H | B | L | | |
| | | | | | | Specifications | | |
| | | | | | | 20" | 40" | 60" |
| 1 | 80 | Union / Flange | 219 | 510 | 260 | 1190 | 1700 | 2210 |
| 2 | 100 | Union / Flange | 400 | 600 | 360 | 1470 | 1980 | 2490 |
| 3 | 100 | Union / Flange | 450 | 690 | 380 | 1510 | 2020 | 2530 |
| 4 | 150 | Flange | 500 | 760 | 420 | 1620 | 2130 | 2640 |
| 5 | 150 | Flange | 550 | 790 | 480 | 1710 | 2220 | 2730 |
| 7 | 200 | Flange | 600 | 910 | 500 | 1850 | 2320 | 2830 |

Order Example : HF3S40FDN100EP

HF---Horizontal high flow filter housings, **3**—3 Cartridges, **S**—304 stainless steel, **40**--- Cartridge length 40", **F**--- Inlet and outlet is flange, **DN100**--- Outside diameter 104, **E**--- Material of o-ring is EPDM, **P**--- Glass beaded and Electrolysis

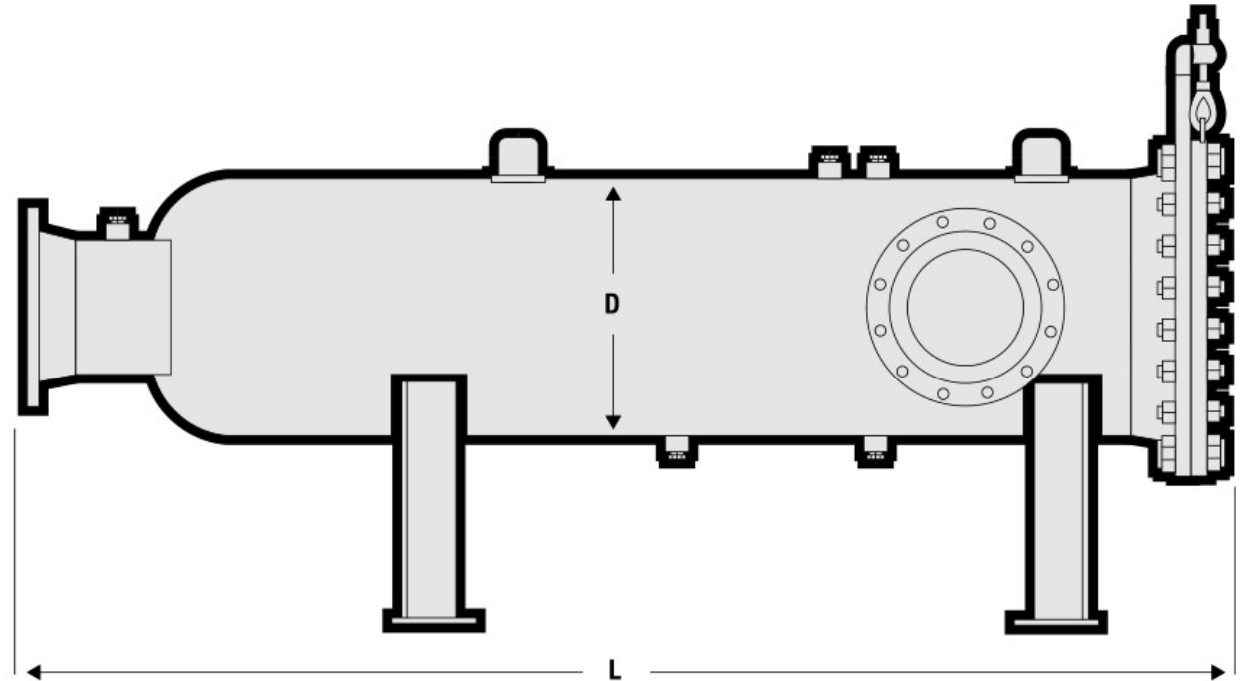
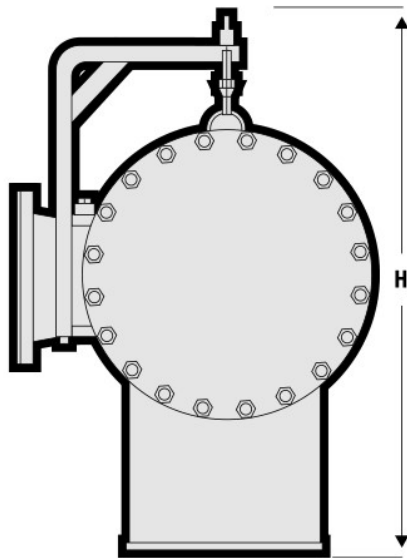


雷金过滤设备

2.18.3 High Flow Filter Housings - Vertical

Technical Data

| Description | Information |
|--------------------|---------------------|
| Design Pressure | 1.0MPa |
| Design Temperature | 140°C |
| Filtration Media | Liquid |
| Design Criteria | Food/Pharmaceutical |
| Cartridge Number | 1-7 |
| Cartridge Type | High flow |



2.18.4 High Flow Filter Housings - Vertical

Outline Dimension

| Cartridge Number | Inlet and Outlet | | Dimension Reference (mm) | | | | |
|------------------|------------------|----------------|--------------------------|-----|-----|------|------|
| | d(Φ) | Form | D(Φ) | H1 | B | H2 | |
| | | | | | | 规格 | |
| | | | | | | 20" | 40" |
| 1 | 80 | Union / Flange | 219 | 370 | 260 | 1060 | 1560 |
| 2 | 100 | Union / Flange | 400 | 550 | 360 | 1350 | 1850 |
| 3 | 100 | Union / Flange | 450 | 550 | 380 | 1350 | 1850 |
| 4 | 150 | Flange | 500 | 550 | 420 | 1550 | 1900 |
| 5 | 150 | Flange | 550 | 550 | 480 | 1550 | 1900 |
| 7 | 200 | Flange | 600 | 550 | 500 | 1750 | 1950 |

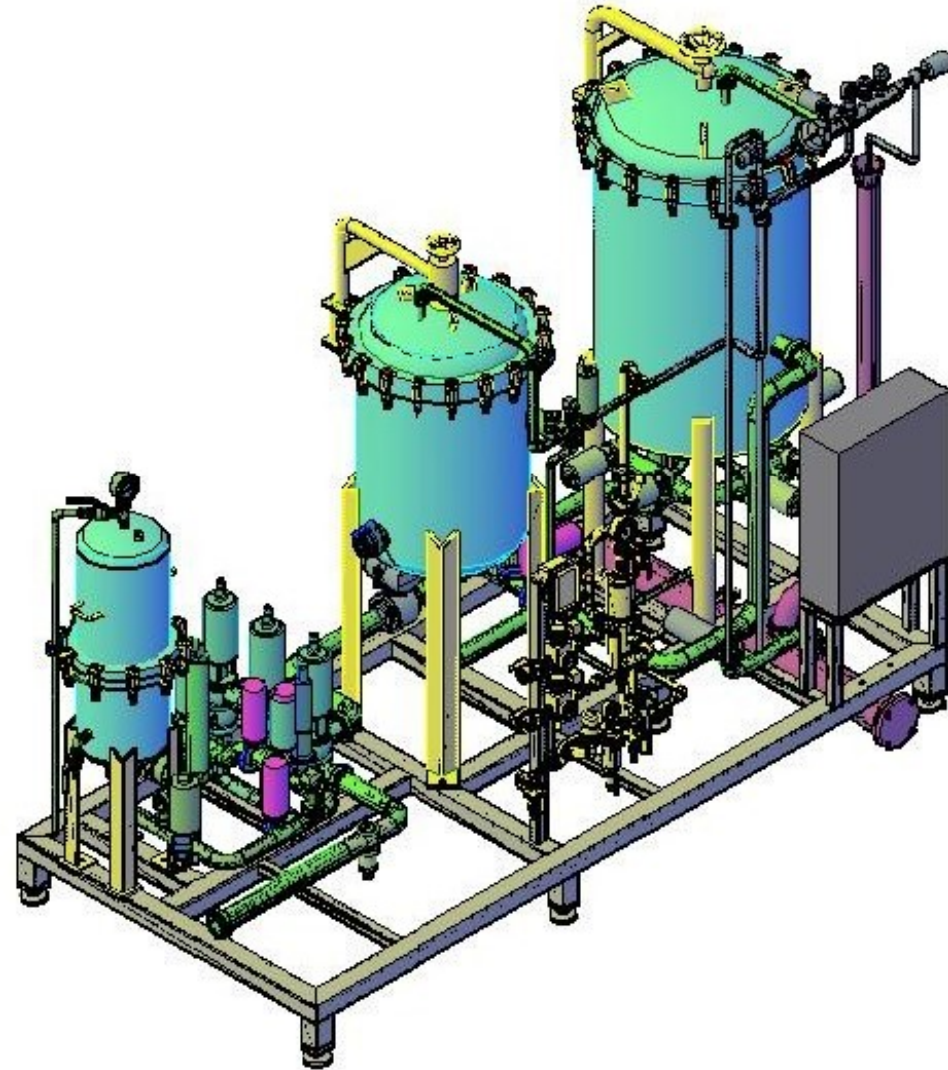
Order Example : HV3S40FDN100EP

HV---Vertical high flow filter housings, **3**—3 Cartridges, **S**—304 stainless steel, **40**--- Cartridge length 40",
F--- Inlet and outlet is flange, **DN100**--- Outside diameter 104, **E**--- Material of o-ring is EPDM, **P**--- Glass beaded and Electrolysis

3.1 Beer Final Filter Systems

Technical Data

| Discription | Information |
|---------------------|-------------|
| Design Pressure | 1.0MPa |
| Design Temperature | 140°C |
| Filtration Media | Beer |
| Ratings | 0.45um |
| Filtration Capacity | 50-400HL/h |
| Cartridge Adapter | 226 |

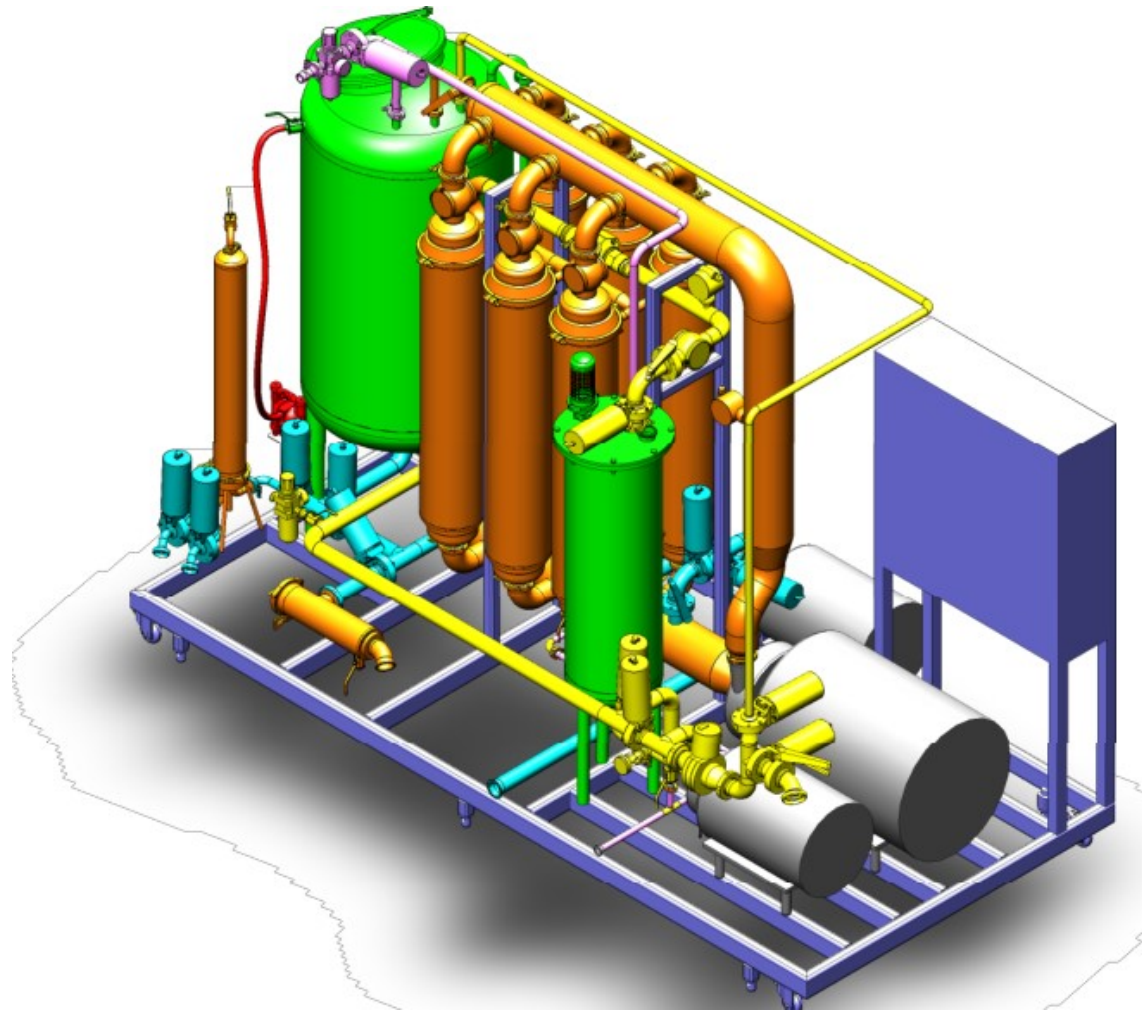


**For more information, contact Rejin

3.2 Cross Flow Filter Systems

Technical Data

| Discription | Information |
|--------------------|-------------|
| Design Pressure | 0.5MPa |
| Design Temperature | 60℃ |
| Filtration Media | Liquid |
| Ratings | 0.1um |
| Module Number | 2-16 |
| Material of Module | PVDF or PES |

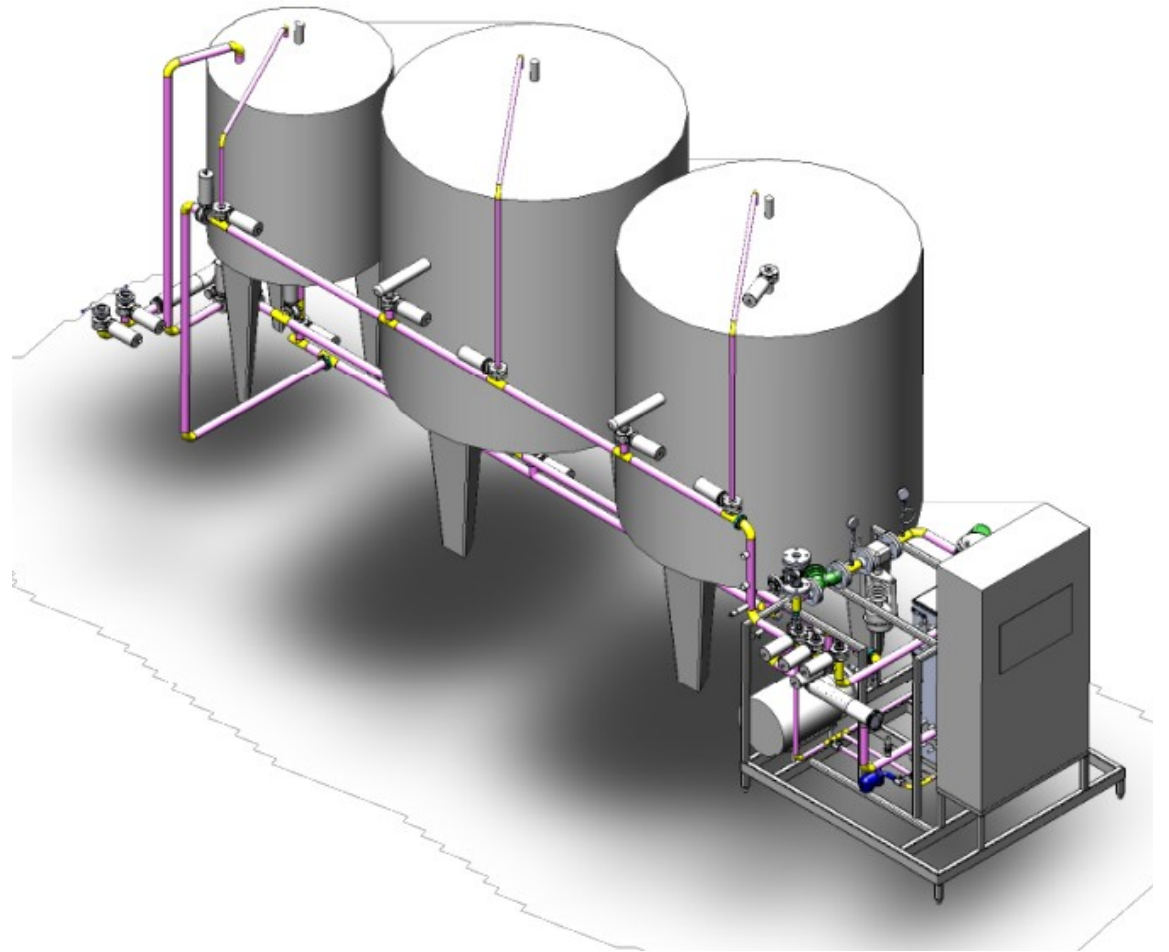


**For more information, contact Rejin

3.3 CIP Systems

Technical Data

| Discription | Information |
|--------------------|-------------|
| Design Pressure | N/A |
| Design Temperature | 100°C |
| Media | Liquid |
| Ratings | 200 mesh |
| | |
| | |

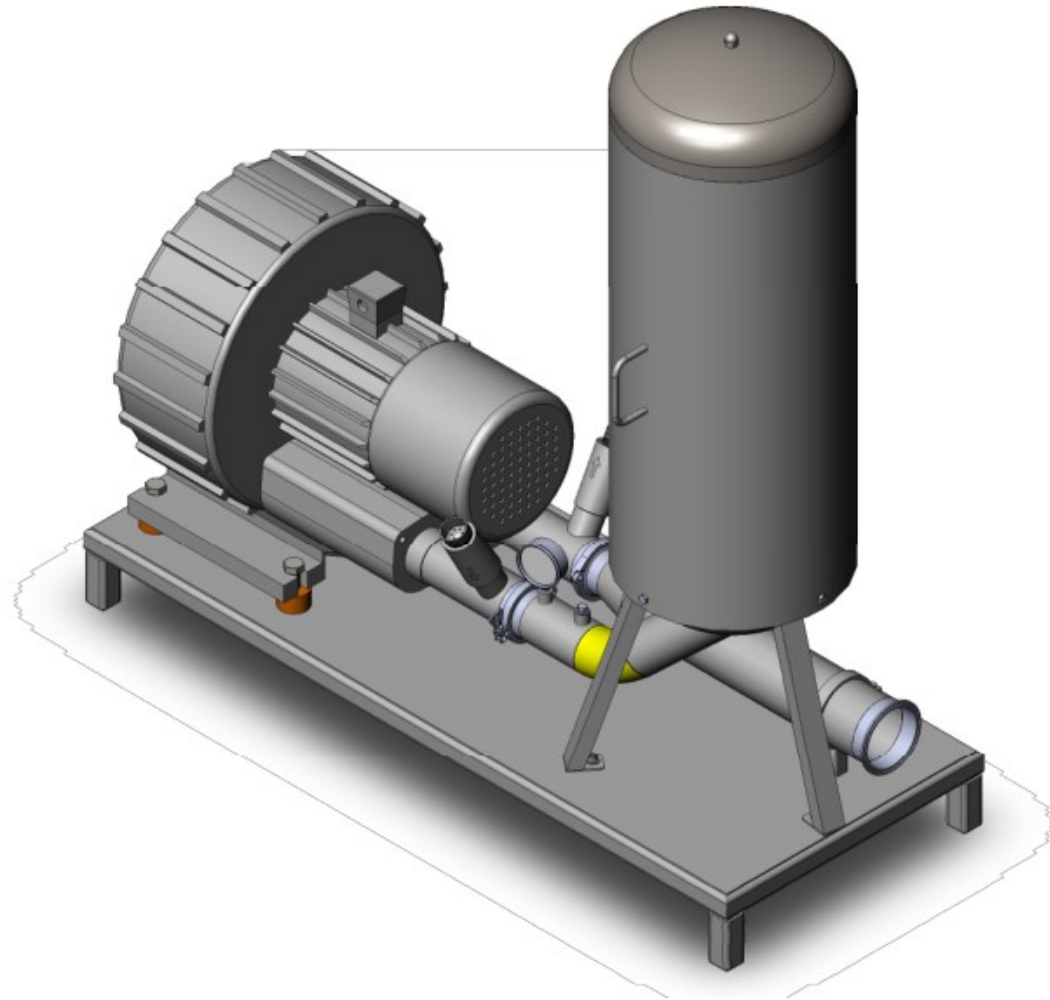


**For more information, contact Rejin

3.4 Sterile Air Filter Systems

Technical Data

| Discription | Information |
|------------------------|-------------|
| Design Pressure | 0.05MPa |
| Design Temperature | 60℃ |
| Filtration Media | Air |
| Ratings | 0.01um |
| Cartridges Number | 1-5 |
| Material of Cartridges | PTFE |

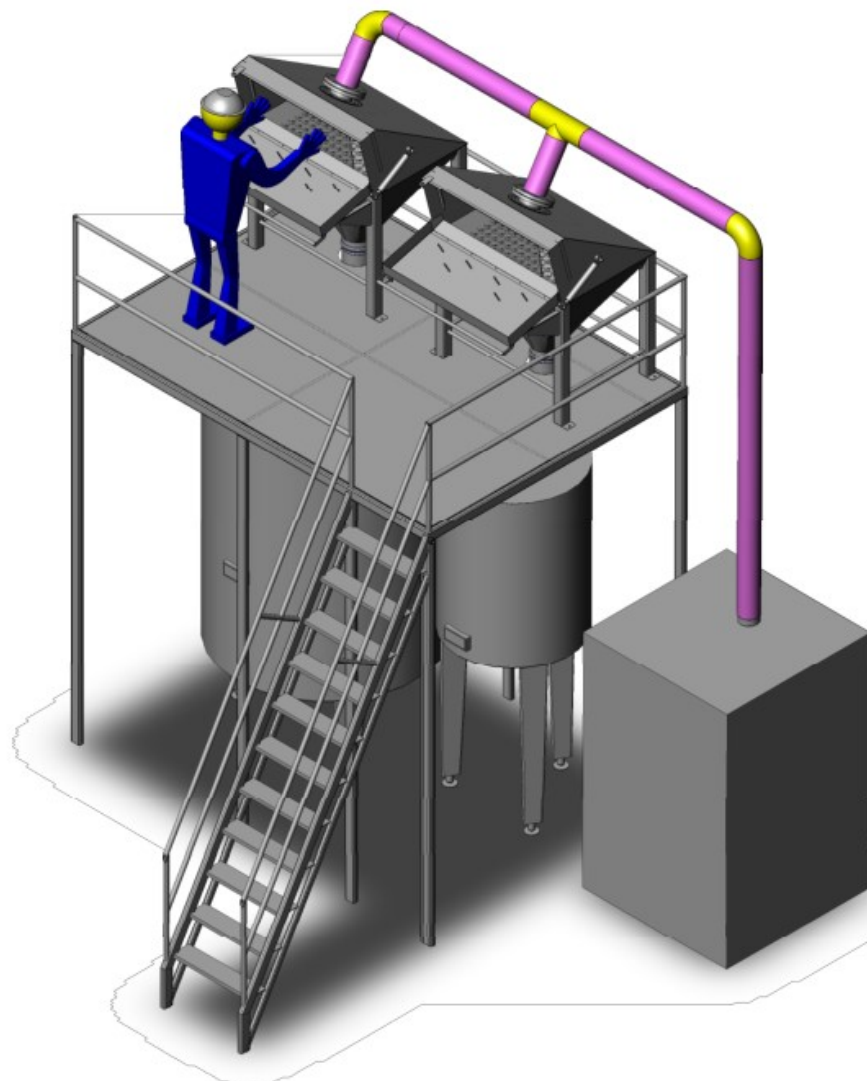


**For more information, contact Rejin

3.5 KG Sack Empty Systems

Technical Data

| Discription | Information |
|--------------------|-----------------------------------|
| Design Pressure | N/A |
| Design Temperature | Ambient Temperature |
| Products | KG or Silica gel |
| Moisture | Dry |
| Consistency | Free flowing, not sticky or lumpy |
| | |



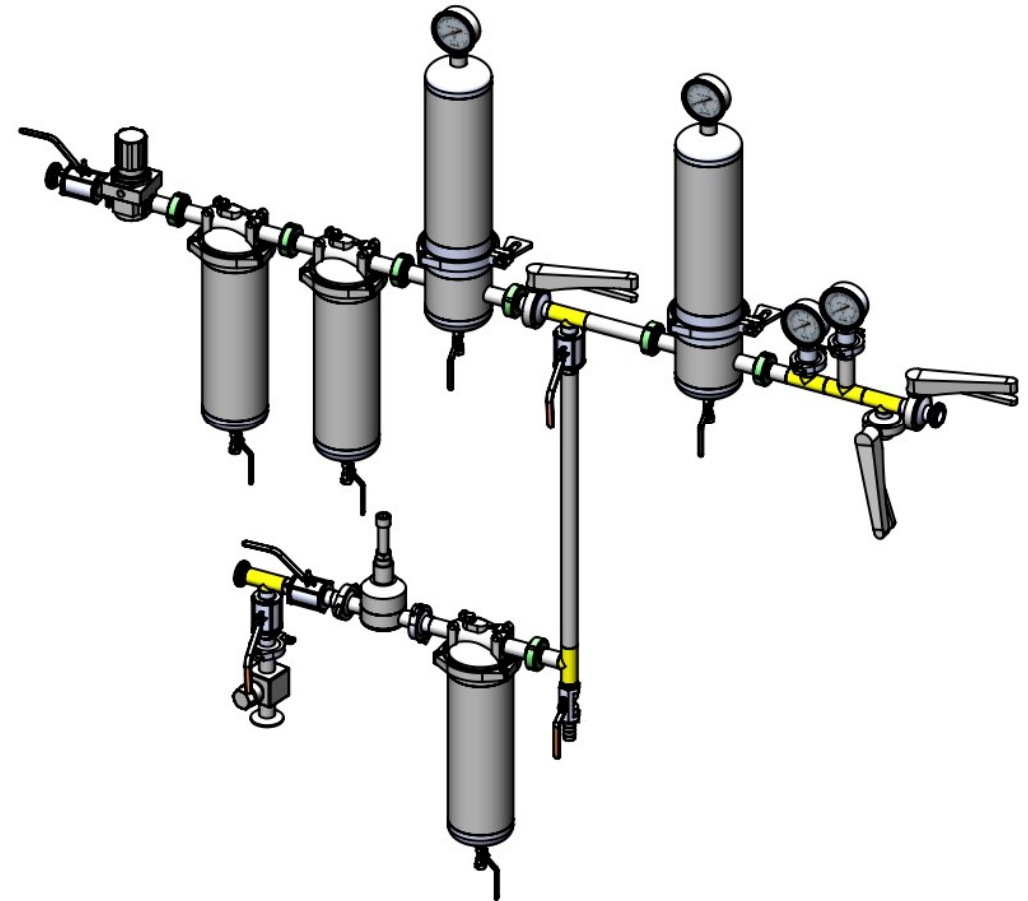
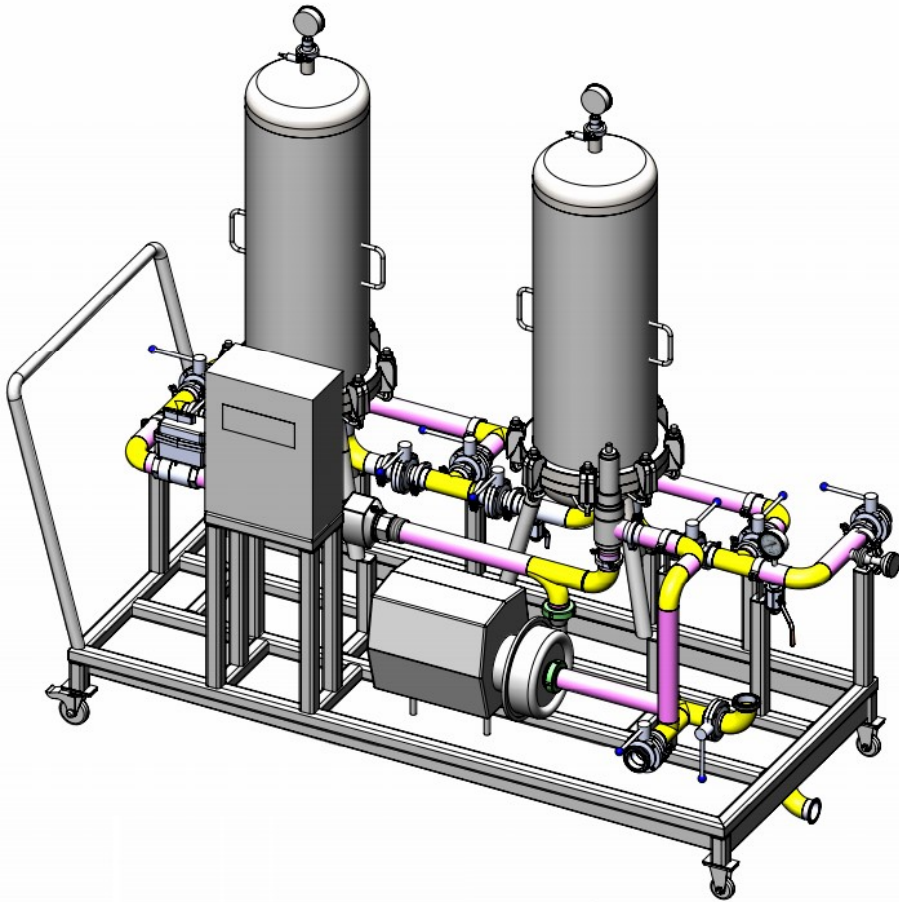
**For more information, contact Rejin



雷金过滤设备

3.6 Various Filter Systems

Liquid Filter Systems



Gas Filter Systems

**For more information, contact Rejin



雷金过滤设备

Appendix 1 Filter Cartridge End Caps



215



222



Short 222



Fins 222



226



226F



法兰头 / Flange



213



平口通 / DOE



平面通 / DOE



0080



0050B



0050



0050A



M20



M30



M36



M42



雷金过滤设备

Appendix 2 Filter Housings Code Tables

| | | | | | | | | | |
|--|---|--------------------|--------------------------------------|-------------------|---|-----------------------------------|--------------------------|--------|--------|
| 1: Housing Sorts | L | G | RT | VG | RB | D | DA | | |
| | Liquid Filter | Air / Gas Filter | T Pipe Filter | Venting Filter | Bag Filter | Casting Head With Rod | Casting Head Without Rod | | |
| 2: No. of Cartridge or Bag | 1~100 | | | | | | | | |
| 3: Housing Materials | S | | | | L | | | | |
| | 304 Stainless Steel | | | | 316L Stainless Steel | | | | |
| 4: Length of Cartridge or Bag | 5 | 10 | 20 | 30 | 40 | 1 | 2 | 3 | 4 |
| | 5 inch | 10 inch | 20 inch | 30 inch | 40 inch | 1# Bag | 2# Bag | 3# Bag | 4# Bag |
| 5: Inlet and Outlet | F | K | R | H | RC | FNPT | | | |
| | Flange | Ferrule | Union | Welded | Taper Internal Thread | American Standard Internal Thread | | | |
| 6: Criteria | DN | | | ISO | | SMS | | | |
| | DIN | | | ISO | | SMS | | | |
| 7: Size of Inlet and Outlet | DIN pipe nominal size, others pipe outer diameter. Thread 1/2~2 means 1/2 ~2 inch | | | | | | | | |
| 8: Position of Inlet and Outlet | CD | DC | DD | DS | SD | | | | |
| | Side in Bottom out | Bottom in Side out | Bottom in Bottom out | Bottom in Top out | Top in Bottom out | | | | |
| 9: Cylinder Connect | B | K | N | E | | | | | |
| | Claw | Ferrule | Normal Bolt | Eyebolt | | | | | |
| 10: Construction of Cylinder | 1R | | 2R | | 1W | | | | |
| | 1 Flange, Cartridge Plate Removable | | 2 Flanges, Cartridge Plate Removable | | 1 Flange, Cartridge Plate Non Removable | | | | |
| 11: Material of Seals | M | V | E | N | | | | | |
| | Silicone | Viton | EPDM | Nitrile | | | | | |
| 12: Treatments of Surface | J | | | | P | | | | |
| | Mirrow Polishing | | | | Glass beaded & lectrolysis | | | | |
| 13: Lift Device (option) | T | | | | Blank | | | | |
| | With Lift Device | | | | Without Lift Device | | | | |
| 14: Adapter (option) | Blank | | | 2 | | 3 | | | |
| | 226 | | | Double Open | | 222 | | | |



雷金过滤设备

Appendix 3 Filter Mesh and Micron Contrast Table

| Mesh | Micron μm | Mesh | Micron μm | Mesh | Micron μm |
|------|----------------------|------|----------------------|-------|----------------------|
| 2 | 8000 | 40 | 380 | 170 | 90 |
| 3 | 6700 | 42 | 355 | 180 | 80 |
| 4 | 4750 | 45 | 325 | 200 | 75 |
| 5 | 4000 | 48 | 300 | 230 | 62 |
| 6 | 3350 | 50 | 270 | 250 | 58 |
| 7 | 2800 | 60 | 250 | 270 | 53 |
| 8 | 2360 | 65 | 230 | 300 | 48 |
| 10 | 1700 | 70 | 212 | 325 | 45 |
| 12 | 1400 | 80 | 180 | 400 | 38 |
| 14 | 1180 | 90 | 160 | 500 | 25 |
| 16 | 1000 | 100 | 150 | 600 | 23 |
| 18 | 880 | 115 | 125 | 800 | 18 |
| 20 | 830 | 120 | 120 | 1000 | 13 |
| 24 | 700 | 125 | 115 | 1340 | 10 |
| 28 | 600 | 130 | 113 | 2000 | 6.5 |
| 30 | 550 | 140 | 109 | 5000 | 2.6 |
| 32 | 500 | 150 | 106 | 8000 | 1.6 |
| 35 | 425 | 160 | 96 | 10000 | 1.3 |



雷金过滤设备

Welcome to visit:

www.rejinfilter.com.cn